

## Opening hours

### BREAKFAST, DINING & SNACKS

Times	Location	Deck
<b>BISCAYNE BAY BUFFET &amp; PIZZA</b>		<b>16 Mid</b>

Beverage Station available 20h/24. Coffee, tea, water, ice and creamers

### BREAKFAST

6:30am - 8:00am	Seashore Restaurant	5 Aft
6:00am - 9:00am	Marketplace Buffet	8 Aft
6:00am - 9:00am	Biscayne Bay Buffet & Pizza	16 Mid

### LUNCH

12noon - 3:30pm	Marketplace Buffet	8 Aft
1:00pm - 4:00pm	Biscayne Bay Buffet & Pizza	16 Mid

### DINNER

5:30pm (Dinner)	Ipanema Restaurant	6 Aft
6:00pm (Dinner)	Seashore Restaurant	5 Aft
6:30pm (Dinner)	Marketplace Restaurant	8 Aft
7:45pm (Dinner)	Ipanema Restaurant	6 Aft
8:30pm (Dinner)	Seashore Restaurant	5 Aft
9:00pm (Dinner)	Marketplace Restaurant	8 Aft
9:45pm (Dinner)	Ipanema Restaurant	6 Aft

In order to offer you the best service, please respect the above times. Restaurant doors will close 15 min after the start of each dinner sitting.

6:00pm - 10:00pm	Seashore Restaurant	5 Aft
------------------	---------------------	-------

\*Aurea & Wellness Guests only - For bookings and full information, drop by the myChoice Reservation Desk, Seashore Restaurant deck 5 (Aft), from 12noon to 3:30pm and from 6:00pm to 7:00pm or simply call 6134 from your stateroom during reservation hours.

6:30pm - 9:30pm	Biscayne Bay Buffet & Pizza	16 Mid
-----------------	-----------------------------	--------

### Extra Available food

12noon - 3:30pm	Marketplace Buffet	8 Aft
12noon - 3:30pm	Marketplace Buffet	8 Aft
1:00pm - 5:30pm	Biscayne Bay Buffet & Pizza	16 Mid
1:00pm - Midnight	Biscayne Bay Buffet & Pizza	16 Mid
10:00pm - 2:00am	Biscayne Bay Buffet & Pizza	16 Mid
Late Night Snacks	Biscayne Bay Buffet & Pizza	16 Mid

### Pizza Delivery\*

\*charge apply  
For reservation please call 2589 from 18:00 to 24:00

### Room Service 24/7 Tel: 2589

For breakfast (from 7:30 to 10:00) please fill up the doorknob menu and place it outside your stateroom door before 2:00 on the desired morning

### SPECIALTY DINING\*

6:00pm - 10:00pm	Bistrot La Bohème**	8 Mid
6:00pm - 10:00pm	Ocean Cay**	16 Mid
6:00pm - 10:00pm	Butcher's Cut**	16 Mid
6:00pm - 10:00pm	Sushi Bar & Pan Asian Restaurant**	16 Mid
6:00pm - 10:00pm	Teppanyaki by Roy Yamaguchi**	16 Mid

\*\*charges apply

For reservations book through MSC for Me or contact the Specialty Restaurant Manager by dialing 6100. Cancellations must take place at least 24 hours before the previously arranged booking time, or a penalty charge of \$5 per person will be applied.

### BARS & LOUNGES

Times	Location	Deck
6:30am - 1:00am	Seaside Bar	5 Mid
5:00pm - Midnight	Shine Bar	6 Mid
8:00am - 1:00am	Venchi Cioccolateria & Coffee Bar	6 Mid
12noon - 8:00pm	Venchi Gelateria & Creperie	7 Aft
8:00am - 2:00am	South Beach Pool Bar	7 Aft
From 10:00pm	Garage Club	7 Aft
7:00pm - 1:00am	Haven Lounge	7 Aft
5:00pm - Midnight	Champagne Bar	7 Mid
From 7:00pm	Miami Casino	7 Fwd
1:00pm - 2:00am	Sports Bar	8 Fwd
8:00am - 1:00am	Seaview Lounge	8 Fwd
6:00pm - 11:00pm	Bistrot La Bohème & Bar	8 Mid
5:00pm - Midnight	Wine & Cocktails	16 Mid
From 8:00am	Miami Beach Bar	16 Aft
1:00pm - 10:00pm	Jungle Bar	19 Mid
12noon - 7:00pm	Aurea Bar	19 Mid
12noon - 10:00pm	Miramar Bar	19 Mid

### WELLBEING & MSC AUREA SPA

9:00am - 9:00pm	Thermal Area	8 Fwd
9:00am - 9:00pm	MSC Aurea SPA	8 Fwd
6:00am - 10:00pm	MSC Gym by Technogym®	8 Fwd

### ENTERTAINMENT AREAS

Closed	Zip Line**	18 Mid
--------	------------	--------

MSC Staff cannot take responsibility for your personal belongings whilst using the zip line

\*\*charges apply

Closed	Forest Aquaventure Pool*	18 Mid
--------	--------------------------	--------

\*Weather permitting

7:00am - 9:00pm	Sports Court	20 Mid
10:00am - 8:00pm	South Beach Pool	7 Aft
10:00am - 9:00pm	Miami Beach Pool	16 Aft
10:00am - 10:00pm	Jungle Pool Lounge	18 Mid
24/7	Virtual Games Arcade	7 Aft
24/7	Library	7 Aft
2:00pm - Midnight	Amusement park (Cinema 5D, F1 Simulator, Board Games and Playing Cards & Bowling)	7 Aft

### YOUTH AREA

8:00pm - 9:30pm	Baby Club	18 Mid
2:00pm - 4:00pm	Mini & Juniors (sign-up only)	18 Mid
8:00pm - 11:00pm	Young & Teens Club	18 Mid
3:00pm - 4:00pm	Lego® Family Fun	18 Mid
8:00pm - 11:00pm	Lego® Family Fun	18 Mid

### MSC VOYAGERS CLUB INFOPOINT - CRUISE CONSULTANT

6:00pm - 8:30pm	Future Cruise Desk	5 Mid
-----------------	--------------------	-------

### MEDICAL CENTER Tel: 2156

9:00am - 12noon	Medical Center	4 Fwd
4:00pm - 8:00pm	Medical Center	4 Fwd

### MEDICAL EMERGENCY: TEL 115

Mid = midship; Fwd = forward ship; Aft = aft ship.

MSC Boutiques, Photo gallery and Casino Opening Hours are according to local regulations. Please see venue for specific opening hours.

# DAILY PROGRAM

## MSC Seaside



22°C / 74 °F min  
27°C / 84 °F max



6:00am Arrival time  
6:30pm All aboard  
7:00pm Departure time



7:08am Sunrise  
5:50pm Sunset



Next Port:  
Ocho Rios, January 15, 2018

## WELCOME TO MIAMI Saturday January 13, 2018

"Moon Over Miami  
Shine as we begin  
So we can stroll beside the  
roll of the rolling sea."

Ray Charles

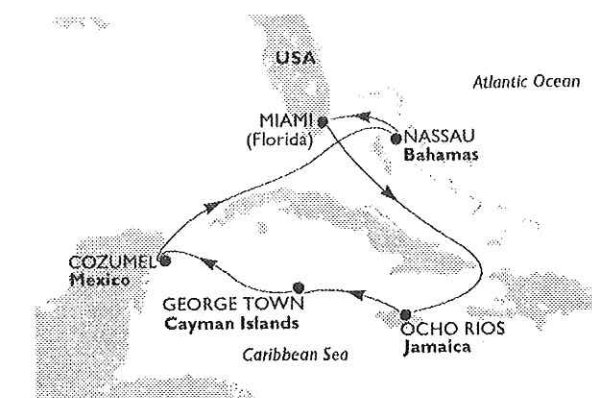
### Nautical information

At 7:00pm the MSC Seaside will leave the port of Miami sailing for approximately 7 nautical miles by the coast of Fisher Island on the starboard (right) side and the famous Miami Beach on the port (left) side.

Once the pilot disembarks, we will enter the Florida Channel on a South/Eastern course, cruising at a distance of approximately 15 nautical miles from the Great Bahamas Bank, which has as the Archipelago's biggest island: Andros.

### Getting off the ship

Please note that upon arrival in Miami, disembarkation will not commence until we receive permission from the local authorities. Please remember to carry a **gouvernement issued photo ID/ Passport** with you and to show your Cruise Card at the gangway exit and entry when you return.



Distance from Miami to Ocho Rios : 720 nautical miles.





# DISCOVER MIAMI!

## LONG BEACHES AND GLAMOUR

Miami it's a city of wildly diverse districts, jigsawed into a vast urban corridor from two technically separate cities: mainland Miami and the huge sand bar known as Miami Beach. If you're sticking to the most popular areas in Miami Beach and downtown, though. Heading north, Central Miami Beach was where 1950s screen stars had fun in the sun and helped cement Miami's international reputation as a glamorous holiday spot. Surprisingly few tourists venture beyond Miami Beach, and so miss out on some of the most enticing parts of the city.

## MSC BIKE ADVENTOURS

Book your bike tour now!

The bike team are available on decks 6!

2:00pm - 10:00pm (deck 6)

ALL ABOARD AT 6:30pm

## MSC Excursions



Deck 6  
(Mid)  
11:30am- 11:30pm

Deck 8  
(Mid)  
5:00pm - 11:00pm

## Miss the ship?

Onboard Satellite  
phone  
00870773308290/1

## MSC Agency in Miami

NORTON LILLY  
INTERNATIONAL (MIAMI)  
1001 North America Way  
Suite 208 Miami, FL 33132  
Tel. +1(305) 377-0628



# HIGHLIGHTS ENTERTAINMENT



Suggested dress tonight: Smart Casual

## THEATRE SHOW: FRANK FOREVER

A tribute to the king of cool  
8:15pm & 9:30pm, Metropolitan Theater,  
decks 6 & 7 (Fwd)

## THEATER SHOW: PIANO & VIOLIN RECITAL

10:30pm, Metropolitan Theater,  
decks 6 & 7 (Fwd)  
No reservation required

## THEATER COMEDY SHOW: BEERPROV

Unscripted Comedy at Sea.  
Brand new jokes each and every night, find out yourself why  
BeerProv has been called " the funniest live comedy show  
you'll ever see"  
11:15pm, Metropolitan Theater, decks 6 & 7 (Fwd)  
No reservation required

## LATIN DANCE NIGHT

Find your Latin spirit in an evening that's guaranteed to make you move. Let the latin seep into your bones while you sip on a cocktail and step up to the dancefloor.

8:30pm, Haven Lounge, deck 7, Aft

## WELCOME NIGHT

Join your Cruise Staff and fellow Guests for an evening of introductions and dancing!

10:30pm, Haven Lounge, deck 7, Aft

## MSCINEMA AL FRESCO:

Beauty And The Beast  
Starring: Emma Watson & Dan Stevens  
Duration: 2h 9min  
Rated: PG

8:00pm & 10:30pm, Miami Beach Pool, deck 16 Aft

# EXCURSIONS

## MAKE EACH TRIP ASHORE UNFORGETTABLE

For the ultimate experience ashore, take our well-organised tours. Relax, make new friends and experience the best each destination has to offer in the safe hands of our expert guides! For more information, visit the Excursion Office, decks 6 & 8.

## MAKE THE MOST OF YOUR TIME ASHORE

A warm welcome aboard from everyone at the Excursion Office! There are so many places to visit during your cruise, you're spoilt for choice. If you're unsure about which tours to book, come and visit us on deck 6. Enjoy your cruise! .

## OCH29 - OCHO RIOS & DUNN'S RIVER FALLS

Rendezvous with one of Jamaica's top attractions when you climb the gorgeous Dunn's River Falls

## OCH14 - DOLPHIN SWIM & DUNN'S RIVER FALLS

Climb one of Jamaica's most famous waterfalls, go swimming with dolphins and have time to explore a replica pirate village - all on one enjoyable half day outing.



# FOOD & BEVERAGE

## BUTCHER'S CUT

Butcher's Cut is where you live the American dream. Choose your favourite breed and cuts from our glass-fronted fridges for a truly delicious steakhouse experience. Visit us on deck 16 or contact the Specialty Restaurant Manager by dialling 6100.

# Important to know



## COMPULSORY EMERGENCY DRILL FOR ALL GUESTS

It will be held at approximately 4:00pm (safety information in the safety video and on your cabin door). When you hear the General emergency signal (7 short blasts and 1 long one) proceed to your Assembly Station. If you cannot attend the drill due to illness or disability, contact Reception - Guest Service on Deck 5 Tel 99. Services will be temporarily suspended.



## THEATRE SHOW RESERVATION

Shows will be presented throughout the cruise. Reservation is compulsory and available from the day before the performance on the interactive screens, the MSC for Me App and stateroom television. We kindly request Guests with reservation to be seated 5 minutes prior to show time. At 5 minutes prior to show time, any available seats will be released for guests without reservations.



## FOOD ALLERGIES

Please remind your waiter of any food allergy you have.



## ELECTRICAL APPLIANCES

Please do not leave personal electrical devices plugged into the power points of your cabin. For safety reasons, your cabin steward will disconnect any devices found left plugged in (refrigerators and TV monitors are excluded).



## Opening hours

### BREAKFAST, DINING & SNACKS

Times	Location	Deck
<b>BISCAYNE BAY BUFFET &amp; PIZZA</b>		<b>16 Mid</b>

Beverage Station available 20h per day. Coffee, tea, water, ice & creamers

### EARLY BIRD BREAKFAST

6:30am - 7:00am	Marketplace Buffet	8 Aft
-----------------	--------------------	-------

### BREAKFAST

8:00am - 9:30am	Seashore Restaurant	5 Aft
7:00am - 11:00am	Marketplace Buffet	8 Aft
8:00am - 11:00am	Biscayne Bay Buffet & Pizza	16 Mid

### LUNCH

12noon - 1:30pm	Seashore Restaurant	5 Aft
12noon - 3:00pm	Marketplace Buffet	8 Aft
12:30pm - 3:30pm Family & Kids Corner	Biscayne Bay Buffet & Pizza	16 Mid

### DINNER

5:30pm (Dinner)	Ipanema Restaurant	6 Aft
6:00pm (Dinner)	Seashore Restaurant	5 Aft
6:30pm (Dinner)	Marketplace Restaurant	8 Aft
7:45pm (Dinner)	Ipanema Restaurant	6 Aft
8:30pm (Dinner)	Seashore Restaurant	5 Aft
9:00pm (Dinner)	Marketplace Restaurant	8 Aft
9:45pm (Dinner)	Ipanema Restaurant	6 Aft

In order to offer you the best service, please respect the above times. Restaurant doors will close 15 min after the start of each dinner sitting.

6:00pm - 10:00pm myChoice Dining\* Seashore Restaurant 5 Aft

\*Aurea & Wellness Guests only - For bookings and full information, drop by the myChoice Reservation Desk, Seashore Restaurant deck 5 (Aft), from 12noon to 3:30pm and from 6:00pm to 7:00pm or simply call 6134 from your stateroom during reservation hours.

6:30pm - 9:30pm	Biscayne Bay Buffet & Pizza	16 Mid
-----------------	-----------------------------	--------

### Additional dining options

12noon - 3:00pm Pizzeria	Marketplace Buffet	8 Aft
12noon - 3:00pm Grill	Marketplace Buffet	8 Aft
12:30pm - 5:30pm Grill	Biscayne Bay Buffet & Pizza	16 Mid
12:30pm - Midnight Pizzeria	Biscayne Bay Buffet & Pizza	16 Mid
4:00pm - 5:30pm Afternoon Snacks	Biscayne Bay Buffet & Pizza	16 Mid
10:00pm - 2:00am Late Night Snacks	Biscayne Bay Buffet & Pizza	16 Mid

### Pizza Delivery\*

\*charge apply  
For reservation please call 2589 from 6:00pm to Midnight

### Room Service 24/7 Tel: 2589

For breakfast (from 7:30 to 10:00) please fill up the doorknob menu and place it outside your stateroom door before 2:00 on the desired morning

### SPECIALTY DINING\*

12noon - 2:00pm 6:00pm - 10:00pm	Bistrot La Bohème**	8 Mid
12noon - 2:00pm 6:00pm - 10:00pm	Ocean Cay**	16 Mid
12noon - 2:00pm 6:00pm - 10:00pm	Butcher's Cut**	16 Mid
12noon - 2:00pm 6:00pm - 10:00pm	Sushi Bar & Pan Asian Restaurant**	16 Mid
12noon - 2:00pm 6:00pm - 10:00pm	Teppanyaki by Roy Yamaguchi**	16 Mid

\*\*charges apply

For reservations book through MSC for Me or contact the Specialty Restaurant Manager by dialing 6100.

Cancellations must take place at least 24 hours before the previously arranged booking time, or a penalty charge of \$5 per person will be applied.

Mid = midship; Fwd = forward ship; Aft = aft ship.

MSC Boutiques, Photo gallery and Casino Opening Hours are according to local regulations. Please see venue for specific opening hours.

### BARS & LOUNGES

Times	Location	Deck
6:30am - 12:30am	Seaside Bar	5 Mid
5:00pm - Midnight	Shine Bar	6 Mid
8:00am - 1:00am	Venchi Cioccolateria & Coffee Bar	6 Mid
10:00am - 8:00pm	Venchi Gelateria & Creperie	7 Aft
8:00am - 2:00am	South Beach Pool Bar	7 Aft
From 10:00pm	Garage Club	7 Aft
7:00pm - 1:00am	Haven Lounge	7 Aft
5:00pm - Midnight	Champagne Bar	7 Mid
From 10:00am	Miami Casino	7 Fwd
1:00pm - 2:00am	Sports Bar	8 Fwd
8:00am - 1:00am	Seaview Lounge	8 Fwd
6:00pm - 10:30pm	Bistrot La Bohème & Bar	8 Mid
12noon - 2:30pm 5:00pm - Midnight	Wine & Cocktails	16 Mid
8:00am - 2:00am	Miami Beach Bar	16 Aft
9:00am - 9:00pm	Jungle Bar	19 Mid
10:00am - 7:00pm	Aurea Bar	19 Mid
9:00am - 10:00pm	Miramar Bar	19 Mid

### WELLBEING & MSC AUREA SPA

9:00am - 9:00pm	Thermal Area	8 Fwd
9:00am - 9:00pm	MSC Aurea SPA	8 Fwd
6:00am - 10:00pm	MSC Gym by Technogym®	8 Fwd

### ENTERTAINMENT AREAS

10:00am - 1:00pm 2:00pm - 5:00pm	Zip Line**	18 Mid
-------------------------------------	------------	--------

MSC Staff cannot take responsibility for your personal belongings while using the zip line  
\*\*charges apply

10:00am - 6:00pm	Forest Aquaventure Park*	18 Mid
------------------	--------------------------	--------

\*Weather permitting

7:00am - 9:00pm	Sports Court	20 Mid
8:00am - 8:00pm	South Beach Pool	7 Aft
8:00am - 9:00pm	Miami Beach Pool	16 Aft
7:30am - 10:00pm	Jungle Pool Lounge	18 Mid
24/7	Virtual Games Arcade	7 Aft
24/7	Library	7 Aft

11:00am - Midnight	Amusement park (Cinema 4D, F1 Simulator, Board Games and playing cards & Bowling)	7 Aft
--------------------	---	-------

### YOUTH AREA

9:00am - 1:00pm 3:30pm - 9:30pm	Baby Club	18 Mid
9:00am - 12:30pm 3:30pm - 11:00pm	Mini & Juniors	18 Mid
10:00am - 1:00pm 3:00pm - 6:00pm 8:00pm - Midnight	Young & Teens Club	18 Mid
1:00pm - 3:00pm	Lego® Family Fun	18 Mid

### MSC VOYAGERS CLUB INFOPOINT - CRUISE CONSULTANT

9:00am - 12:30pm 5:00pm - 8:30pm	Future Cruise Desk	5 Mid
-------------------------------------	--------------------	-------

### MEDICAL CENTER Tel: 2156

9:00am - 12noon 4:00pm - 8:00pm	Medical Center	4 Fwd
------------------------------------	----------------	-------

### MEDICAL EMERGENCY: TEL 115

# DAILY PROGRAM

## MSC Seaside



24°C / 78 F° min  
27°C / 84 F° max



7:00am Sunrise  
5:42pm Sunset



Next Port:  
Ocho Rios, January 15, 2018

## AT SEA Sunday January 14, 2018

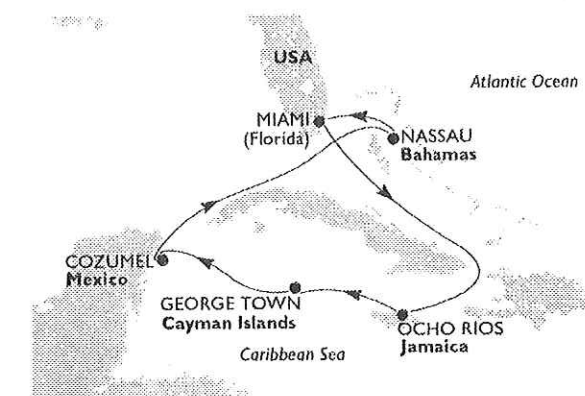
"When anxious, uneasy and bad thoughts come, I go to the sea, and the sea drowns them out with its great wide sounds."

Rainer Maria Rilke

### Nautical information

In the morning we will enter the famous Old Bahamas Channel, a narrow sea that separates the Great Bahamas Bank on the port (left) side from the island of Cuba on starboard (right) side. Around noon we will be in the vicinity of Cayo Sabinal at a distance of approximately 10 nautical miles on the starboard (right) side. During the evening we will reach the most Easterly point of the island of Cuba, Punta Maisi, which we will pass at a distance of 5 nautical miles; from this point we will cruise on a South-Western course throughout the evening.

Distance from Miami to Ocho Rios:  
720 nautical miles.





## DISCOVER THE SHIP!

MSC Seaside brings to life the key distinguishing elements of the MSC Cruises experience. MSC Seaside rewrites the rule book of cruise ship design, blending indoor and outdoor areas to connect you with the sea like never before. Circling the entire ship as low as Deck 8 is a unique seafront promenade lined with places to eat, drink, shop, swim and sunbathe. And you can enjoy more superb views from the two-deck glass-walled atrium and panoramic elevators. Guests can enjoy a range of open-air activities such as dining and drinking al fresco, strolling along the promenade or simply taking in the beautiful sea views from the privacy of one of the many balcony staterooms.

### MSC BIKE ADVENTOURS

For more information on our bike tours, come and speak to the bike team on deck 6.

9:00am-1:00pm/4:00pm-8:00pm (deck 6)

### MSC Excursions



Deck 6 (Mid)  
9:00am - 11:00pm

Deck 8 (Mid)  
8:00am - 2:00pm  
5:30pm - 10:30pm

## EXCURSIONS - Our suggestions for the next days

### MAKE EACH TRIP ASHORE UNFORGETTABLE

For the ultimate experience ashore, take our well-organised tours. Relax, make new friends and experience the best each destination has to offer in the safe hands of our expert guides! For more information, visit the Excursion Office, decks 6 & 8.

### GCA36 - BEST OF CAYMAN

This "best of Cayman" outing seeks to present the most memorable spots on the island for your enjoyment.

### WIN A DISCOUNT!

Don't miss the opportunity to win a free excursion in take part in a prize draw for a 20% discount on an excursion of your choice and, during the cruise, a free excursion to Cozumel!

Just attend the MSC Cruise Guide and fill in the invitation - our lucky winner could be you!

### GCA25 - DOLPHIN SWIM & STINGRAY CITY

From swimming with a pod of dolphins in the Caribbean Sea to interacting with southern stingrays in shallow waters, this wildlife-centric tour gets you up close and personal with Mother Nature.

## HIGHLIGHTS ENTERTAINMENT

Captain **Pier Paolo Scala** is calling for a special night of celebration in the **Atrium, decks 5, 6, 7 & 8 (Mid)**, where he will personally greet you. An evening of elegance and refinement to welcome guests aboard.

**Welcome Cocktail:** 5:00pm - 6:15pm

**Meet the Captain:** 7:30pm - 8:30pm

\*On this occasion, a photo will be taken by our photographers.

**Officers Introduction:** 8:30pm

*Suggested dress code tonight: Smart Casual*

### THEATER SHOW: THE WIZARD

Who hasn't dreamed of finding the elixir of eternal youth? The mysterious alchemist known as the Wizard certainly has. But when he finally discovers it, it might not be all that it promises...In a fascinating steampunk world, you'll be astounded by spectacular illusions and much more. Enter a world of wonder. Enter the world of the Wizard.

7:00pm, 8:15pm & 9:30pm, Metropolitan Theater, decks 6 & 7 (Fwd)

### THEATRE SHOW: INVITO ALL' OPERA

10:30pm, Metropolitan Theater, decks 6 & 7 (Fwd)

No reservation required

### THEATER COMEDY SHOW: BEERPROV

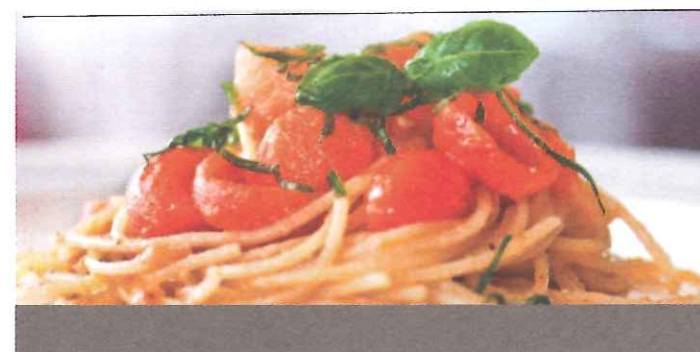
**Adults Only. R Rated**

Unscripted Comedy at Sea.

Brand new jokes each and every night.

11:15pm, Metropolitan Theater, decks 6 & 7 (Fwd)

No reservation required



## FOOD & BEVERAGE

### TEPPANYAKI BY ROY YAMAGUCHI

The modern East-West cooking style of Japanese cuisine will come to life via four Teppanyaki grills. With a modern twist on Asian cuisine, guests can sit at the cooking stations to watch their delicious Japanese dishes come to life in front of their eyes. Expert chefs will cook with flare on an open grill - a visual spectacle and feast for the senses with flames and sizzling ingredients all coming together to form flavorful dishes.

### ASIAN FUSION BY ROY YAMAGUCHI

The à la carte restaurant will serve gourmet Asian creations in a stylish venue with incredible sea views.

### SUSHI BY ROY YAMAGUCHI

The Sushi Bar will serve the freshest sushi, sashimi and tempura.

### BINGO

Any bingo lovers on board? Fantastic. We just wanted to give you the heads up for the big heads down. Get ready, the numbers will be drawn soon!

3:00pm, Metropolitan Theater, decks 6 & 7, Fwd

### MSCINEMA AL FRESCO:

Spider Man Homecoming

Starring: Tom Holland & Michael Keaton

Rated: PG-13

Duration: 2h 13min

8:00pm & 10:30pm, Miami Beach Pool, deck 16 Aft

### DANCING SHOES

If you like ballroom, you'll love this. Come and watch couples compete in a dance contest to find the next Fred Astaire and Ginger Rogers.

10:30pm, Haven Lounge, deck 7, Aft

## Important to know



### 24/7 ONBOARD LIBRARY SERVICE

Take advantage of our wide range of titles available 24/7 in the Library on (deck 7 Aft) and simply return any borrowed books by 12:00 on the day before you disembark.



### POOL CAUTION

Kindly read the health notices at the Pool and Spa Pool areas and always shower before entering a swimming pool. Please do not dive, jump or run around the pools. Children under 16 must be accompanied by an adult. No nappies are



### THEATRE SHOW RESERVATION

Shows will be presented throughout the cruise. Reservation is compulsory and available from the day before the performance on the interactive screens, the MSC for Me App and stateroom television. We kindly request Guests with reservation to be seated 5 minutes prior to show time. At 5 minutes prior to show time, any available seats will be released for guests without reservations.



## Opening hours

### BREAKFAST, DINING & SNACKS

Times	Location	Deck
<b>BISCAYNE BAY BUFFET &amp; PIZZA</b>		<b>16 Mid</b>

*Beverage Station available 20h/24. Coffee, tea, water, ice and creamers*

### EARLY BIRD BREAKFAST

6:30am - 7:00am	Marketplace Buffet	8 Aft
-----------------	--------------------	-------

### BREAKFAST

7:30am - 9:00am	Seashore Restaurant	5 Aft
-----------------	---------------------	-------

7:00am - 11:00am	Marketplace Buffet	8 Aft
------------------	--------------------	-------

8:00am - 11:00am	Biscayne Bay Buffet & Pizza	16 Mid
------------------	-----------------------------	--------

### LUNCH

12noon - 3:00pm	Marketplace Buffet	8 Aft
-----------------	--------------------	-------

### DINNER

5:30pm (Dinner)	Ipanema Restaurant	6 Aft
-----------------	--------------------	-------

6:00pm (Dinner)	Seashore Restaurant	5 Aft
-----------------	---------------------	-------

6:30pm (Dinner)	Marketplace Restaurant	8 Aft
-----------------	------------------------	-------

7:45pm (Dinner)	Ipanema Restaurant	6 Aft
-----------------	--------------------	-------

8:30pm (Dinner)	Seashore Restaurant	5 Aft
-----------------	---------------------	-------

9:00pm (Dinner)	Marketplace Restaurant	8 Aft
-----------------	------------------------	-------

9:45pm (Dinner)	Ipanema Restaurant	6 Aft
-----------------	--------------------	-------

*In order to offer you the best service, please respect the above times. Restaurant doors will close 15 min after the start of each dinner sitting.*

6:00pm - 10:00pm myChoice Dining*	Seashore Restaurant	5 Aft
-----------------------------------	---------------------	-------

*\*Aurea & Wellness Guests only - For bookings and full information, drop by the myChoice Reservation Desk, Seashore Restaurant deck 5 (Aft), from 12noon to 3:30pm and from 6:00pm to 7:00pm or simply call 6134 from your stateroom during reservation hours.*

6:30pm - 9:30pm	Biscayne Bay Buffet & Pizza	16 Mid
-----------------	-----------------------------	--------

### Additional dining options

12noon - 3:00pm Pizzeria	Marketplace Buffet	8 Aft
--------------------------	--------------------	-------

12noon - 3:00pm Grill	Marketplace Buffet	8 Aft
-----------------------	--------------------	-------

2:30pm - 5:30pm Grill	Biscayne Bay Buffet & Pizza	16 Mid
-----------------------	-----------------------------	--------

2:30pm - Midnight Pizzeria	Biscayne Bay Buffet & Pizza	16 Mid
----------------------------	-----------------------------	--------

2:30pm - 5:30pm Grab & Go	Biscayne Bay Buffet & Pizza	16 Mid
---------------------------	-----------------------------	--------

10:00pm - 2:00am Late Night Snacks	Biscayne Bay Buffet & Pizza	16 Mid
------------------------------------	-----------------------------	--------

### Pizza Delivery\*

*\*charge apply For reservation please call 2589 from 6:00pm to Midnight*

**Room Service 24/7 Tel: 2589**

*For breakfast (from 7:30 to 10:00) please fill up the doorknob menu and place it outside your stateroom door before 2:00 on the desired morning*

### SPECIALTY DINING\*

6:00pm - 10:00pm	Bistrot La Bohème**	8 Mid
------------------	---------------------	-------

6:00pm - 10:00pm	Ocean Cay**	16 Mid
------------------	-------------	--------

6:00pm - 10:00pm	Butcher's Cut**	16 Mid
------------------	-----------------	--------

6:00pm - 10:00pm	Sushi Bar & Pan Asian Restaurant**	16 Mid
------------------	------------------------------------	--------

6:00pm - 10:00pm	Teppanyaki by Roy Yamaguchi**	16 Mid
------------------	-------------------------------	--------

**\*\*charges apply**

*For reservations book through MSC for Me or contact the Specialty Restaurant Manager by dialing 6100.*

*Cancellations must take place at least 24 hours before the previously arranged booking time, or a penalty charge of \$5 per person will be applied.*

*Mid = midship; Fwd = forward ship; Aft = aft ship.*

*MSC Boutiques, Photo gallery and Casino Opening Hours are according to local regulations. Please see venue for specific opening hours.*

*MSC Boutiques, Photo gallery and Casino Opening Hours are according to local regulations. Please see venue for specific opening hours.*

*MSC Boutiques, Photo gallery and Casino Opening Hours are according to local regulations. Please see venue for specific opening hours.*

*MSC Boutiques, Photo gallery and Casino Opening Hours are according to local regulations. Please see venue for specific opening hours.*

*MSC Boutiques, Photo gallery and Casino Opening Hours are according to local regulations. Please see venue for specific opening hours.*

*MSC Boutiques, Photo gallery and Casino Opening Hours are according to local regulations. Please see venue for specific opening hours.*

*MSC Boutiques, Photo gallery and Casino Opening Hours are according to local regulations. Please see venue for specific opening hours.*

*MSC Boutiques, Photo gallery and Casino Opening Hours are according to local regulations. Please see venue for specific opening hours.*

*MSC Boutiques, Photo gallery and Casino Opening Hours are according to local regulations. Please see venue for specific opening hours.*

### BARS & LOUNGES

Times	Location	Deck
6:30am - 12:30am	Seaside Bar	5 Mid

5:00pm - Midnight	Shine Bar	6 Mid
-------------------	-----------	-------

8:00am - 1:00am	Venchi Cioccolateria & Coffee Bar	6 Mid
-----------------	-----------------------------------	-------

12noon - 8:00pm	Venchi Gelateria & Creperie	7 Aft
-----------------	-----------------------------	-------

8:00am - 2:00am	South Beach Pool Bar	7 Aft
-----------------	----------------------	-------

From 10:00pm	Garage Club	7 Aft
--------------	-------------	-------

7:00pm - 1:00am	Haven Lounge	7 Aft
-----------------	--------------	-------

5:00pm - Midnight	Champagne Bar	7 Mid
-------------------	---------------	-------

From 5:00pm	Miami Casino	7 Fwd
-------------	--------------	-------

5:00pm - 2:00am	Sports Bar	8 Fwd
-----------------	------------	-------

8:00am - 1:00am	Seaview Lounge	8 Fwd
-----------------	----------------	-------

6:00pm - 10:30pm	Bistrot La Bohème & Bar	8 Mid
------------------	-------------------------	-------

5:00pm - Midnight	Wine & Cocktails	16 Mid
-------------------	------------------	--------

From 8:00am	Miami Beach Bar	16 Aft
-------------	-----------------	--------

11:00am - 9:00pm	Jungle Bar	19 Mid
------------------	------------	--------

10:00am - 7:00pm	Aurea Bar	19 Mid
------------------	-----------	--------

12noon - 10:00pm	Miramar Bar	19 Mid
------------------	-------------	--------

### WELLBEING & MSC AUREA SPA

9:00am - 9:00pm	Thermal Area	8 Fwd
-----------------	--------------	-------

9:00am - 9:00pm	MSC Aurea SPA	8 Fwd
-----------------	---------------	-------

6:00am - 10:00pm	MSC Gym by Technogym®	8 Fwd
------------------	-----------------------	-------

### ENTERTAINMENT AREAS

10:00am - 1:00pm	Zip Line**	18 Mid
------------------	------------	--------

*MSC Staff cannot take responsibility for your personal belongings while using the zip line*

*\*\*charges apply*

10:00am - 6:00pm	Forest Aquaventure Park*	18 Mid
------------------	--------------------------	--------

*\*Weather permitting*

7:00am - 9:00pm	Sports Court	20 Mid
-----------------	--------------	--------

8:00am - 8:00pm	South Beach Pool	7 Aft
-----------------	------------------	-------

8:00am - 9:00pm	Miami Beach Pool	16 Aft
-----------------	------------------	--------

7:30am - 10:00pm	Jungle Pool Lounge	18 Mid
------------------	--------------------	--------

24/7	Virtual Games Arcade	7 Aft
------	----------------------	-------

24/7	Library	7 Aft
------	---------	-------

4:00pm - Midnight	Amusement park (Cinema 5D, F1 Simulator, Board Games and Playing Cards & Bowling)	7 Aft
-------------------	---	-------

### YOUTH AREA

9:00am - 1:00pm	Baby Club	18 Mid
-----------------	-----------	--------

3:30pm - 11:00pm	Mini & Juniors	18 Mid
------------------	----------------	--------

9:00am - 11:00pm	Young & Teens Club	18 Mid
------------------	--------------------	--------

4:00pm - 6:00pm	Young & Teens Club	18 Mid
-----------------	--------------------	--------

8:00pm - Midnight	Young & Teens Club	18 Mid
-------------------	--------------------	--------

4:00pm - 6:00pm	Lego® Family Fun	18 Mid
-----------------	------------------	--------

### MSC VOYAGERS CLUB INFOPOINT - CRUISE CONSULTANT

4:30pm - 8:30pm	Future Cruise Desk	5 Mid
-----------------	--------------------	-------

### MEDICAL CENTER Tel: 2156

9:00am - 12noon	Medical Centre	4 Fwd
-----------------	----------------	-------

### MEDICAL EMERGENCY: TEL 115

# DAILY PROGRAM

ENG

## MSC Seaside



26°C / 82 °F min  
29°C / 88 °F max



9:00am Arrival time  
4:30pm All aboard  
5:00pm Departure time



6:43am Sunrise  
5:53pm Sunset



Next Port:  
George Town, January 16, 2018

## WELCOME TO OCHO RIOS Monday January 15, 2018

*"I can't really live outside Jamaica. I can be away, but only for a while."*

Usain Bolt

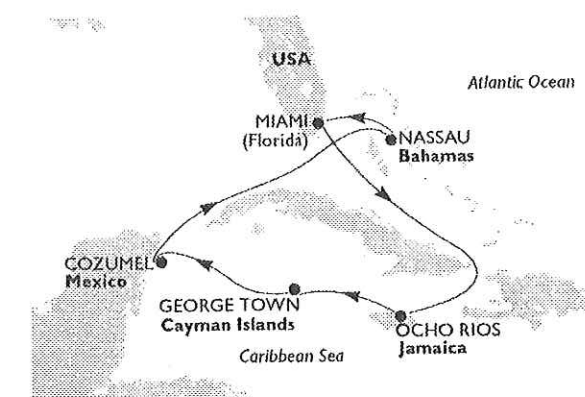
### Nautical information

Before the local pilot embarks at 8:00am, we will sail for approximately an hour along the Northeastern coast of Jamaica, visible on the port (left) side of the ship. We will depart at 5:00pm and will continue cruising on a Western course along the Northern coast of Jamaica.

### Getting off the ship

Please note that upon arrival in Ocho Rios, disembarkation will not commence until we receive permission from the local authorities. Please remember to carry a government issued photo ID/ Passport with you and to show your Cruise Card at the gangway exit and entry when you return.

Distance from Ocho Rios to George Town : 253 nautical miles.







# DISCOVER OCHO RIOS!

## MSC BIKE ADVENTOURS

Book your bike tour now!

The bike team are available on deck 6!

6:00pm-8:00pm (deck 6)

ALL ABOARD AT **4:30pm**

## MSC Excursions

	Deck 6 (Mid)	Deck 8 (Mid)
	8:00am - 9:30am 6:00pm - 11:00pm	8:00am - 9:30am 6:00pm - 10:30pm
Miss the ship?	Onboard Satellite phone 00870773308290/1	
MSC Agency in Ocho Rios	LANNAMAN and MORRIS LTD Tel +1 876 974 2253	

Jamaica promises paradise with fine beaches, jungle mountain tops and the chance to enjoy a private villa, an active resort, or immerse yourself in island life. Hiking or horseback riding is a wonderful way to explore Jamaica, while scuba diving is perfect for below the surface. Ocho Rios is sheltered in a harbor on Jamaica's north coast amid a region of tropical gardens and water falls. Hibiscus and poinsettia grow in profusion like nowhere else on the island. A climb up Dunn's River Falls is an Ocho Rios highlight. This 600-foot cascade is one of Jamaica's best-known and most photographed natural attractions. Gardens offer an abundance of indigenous plants, flowers and trees. Lush Fern Gully provides a look at foliage unique to the island. Sugarcane, coffee and bananas have been harvested since the 18th Century at various plantations and Great Houses. River-rafting is an option and evening canoe rides up the torch-lit White River take visitors to a folklore performance and dinner.

## EXCURSIONS

### DON'T MISS OUT IN COZUMEL!

Last chance to join our shore excursions in Cozumel book now!

The excursion team is waiting for you on deck 6 & 8.

### COZ37 – SAN GERVASIO MAYAN RUINS & BEACH COMBO

From Mayan ruins, through a sightseeing drive around the island right up to time at the beach, this tour promises to deliver informative, entertaining and relaxing hours off the ship.

### COZ23 – TULUM MAYAN RUINS

A trip to the Mexican mainland and the fabulous ruins of Tulum – the only Mayan city to sit directly on the Caribbean Sea – is on the itinerary of this all day outing, which includes a light packed lunch.

### EXPERIENCE THE BEST IN EVERY DESTINATION

For a smooth, safe and sociable trip ashore, book your place on our excursions. With carefully planned itineraries, expert guides and priority access to sights, you'll save time and savour every moment.

Excursion Office, decks 6 & 8.



# HIGHLIGHTS ENTERTAINMENT



Suggested dress tonight: Smart Casual / White

## THEATRE SHOW: MY LIFE IN MUSIC

An emotional collection of famous soundtracks for you to enjoy with our dancers and artists.

7:00pm, 8:15pm & 9:30pm, Metropolitan Theater, decks 6 & 7 (Fwd)

## THEATRE SHOW: EVERGREEN CLASSICS

10:30pm, Metropolitan Theater, decks 6 & 7 (Fwd)  
No reservation required

## THEATER COMEDY SHOW: BEERPROV

Unscripted Comedy at Sea.  
Brand new jokes each and every night, find out yourself why BeerProv has been called "the funniest live comedy show you'll ever see"

11:15pm, Metropolitan Theater, decks 6 & 7 (Fwd)  
No reservation required



## FOOD & BEVERAGE

### SPECIALITY DINING PACKAGE

Two respected restaurant brands, two refined culinary experiences.  
Butcher's Cut Steakhouse and Sushi Bar & Pan Asian Restaurant.  
Guests who want to reserve a dining experience on board are invited to visit the restaurant or contact the Thematic Restaurant Manager dialling 6100.

## DANCE CLASS: SALSA

Ever wanted to learn the steps from the most famous dances from around the world? Here is your chance, as specialist instructors are ready to teach you everything about salsa.

8:30pm, Piazza Grande, deck 6 (Fwd)

## NAME THAT PARTY TUNE

How well do you know your tunes?

9:00pm, Piazza Grande, deck 6 (Fwd)

## WHITE PARTY

Dress in your best white and join us for an unforgettable White Party! Featuring live music from Caribbean Fusion.

10:45pm onwards, Miami Beach Pool, decks 16 (Aft)

## Important to know



### CREW SAFETY DRILL

For the safety of everyone onboard, a general emergency exercise for crew members only will be held today at 9:45am. Guests are not required to participate.



### TRANSFER SERVICE TO THE AIRPORT

If you need a transfer from the port to Miami or Fort Lauderdale airport, you can ask for information and assistance at the Reception – Guest service desk, deck 5 before 12noon on the of January 17, 2018.



### THEATRE SHOW RESERVATION

Shows will be presented throughout the cruise. Reservation is compulsory and available from the day before the performance on the interactive screens, the MSC for Me App and stateroom television. We kindly request Guests with reservation to be seated 5 minutes prior to show time. At 5 minutes prior to show time, any available seats will be released for guests without reservations.



## Opening hours

### BREAKFAST, DINING & SNACKS

Times	Location	Deck
<b>BISCAYNE BAY BUFFET &amp; PIZZA</b>		<b>16 Mid</b>

*Beverage Station available 20h/24. Coffee, tea, water, ice and creamers*

### EARLY BIRD BREAKFAST

6:30am - 7:00am	Marketplace Buffet	8 Aft
-----------------	--------------------	-------

### BREAKFAST

7:30am - 9:00am	Seashore Restaurant	5 Aft
-----------------	---------------------	-------

7:00am - 11:00am	Marketplace Buffet	8 Aft
------------------	--------------------	-------

8:00am - 11:00am	Biscayne Bay Buffet & Pizza	16 Mid
------------------	-----------------------------	--------

### LUNCH

12noon - 3:00pm	Marketplace Buffet	8 Aft
-----------------	--------------------	-------

### DINNER

5:30pm (Dinner)	Ipanema Restaurant	6 Aft
-----------------	--------------------	-------

6:00pm (Dinner)	Seashore Restaurant	5 Aft
-----------------	---------------------	-------

6:30pm (Dinner)	Marketplace Restaurant	8 Aft
-----------------	------------------------	-------

7:45pm (Dinner)	Ipanema Restaurant	6 Aft
-----------------	--------------------	-------

8:30pm (Dinner)	Seashore Restaurant	5 Aft
-----------------	---------------------	-------

9:00pm (Dinner)	Marketplace Restaurant	8 Aft
-----------------	------------------------	-------

9:45pm (Dinner)	Ipanema Restaurant	6 Aft
-----------------	--------------------	-------

*In order to offer you the best service, please respect the above times. Restaurant doors will close 15 min after the start of each dinner sitting.*

6:00pm - 10:00pm myChoice Dining*	Seashore Restaurant	5 Aft
-----------------------------------	---------------------	-------

*\*Aurea & Wellness Guests only - For bookings and full information, drop by the myChoice Reservation Desk, Seashore Restaurant deck 5 (Aft), from 12noon to 3:30pm and from 6:00pm to 7:00pm or simply call 6134 from your stateroom during reservation hours.*

6:30pm - 9:30pm	Biscayne Bay Buffet & Pizza	16 Mid
-----------------	-----------------------------	--------

### Additional dining options

12noon - 3:00pm Pizzeria	Marketplace Buffet	8 Aft
--------------------------	--------------------	-------

12noon - 3:00pm Grill	Marketplace Buffet	8 Aft
-----------------------	--------------------	-------

2:00pm - 5:30pm Grill	Biscayne Bay Buffet & Pizza	16 Mid
-----------------------	-----------------------------	--------

2:00pm - Midnight Pizzeria	Biscayne Bay Buffet & Pizza	16 Mid
----------------------------	-----------------------------	--------

2:00pm - 5:30pm Grab & Go	Biscayne Bay Buffet & Pizza	16 Mid
---------------------------	-----------------------------	--------

10:00pm - 2:00am Late Night Snacks	Biscayne Bay Buffet & Pizza	16 Mid
------------------------------------	-----------------------------	--------

### Pizza Delivery\*

*\*charge apply  
For reservation please call 2589 from 6:00pm to Midnight*

### Room Service 24/7 Tel: 2589

*For breakfast (from 7:30 to 10:00) please fill up the doorknob menu and place it outside your stateroom door before 2:00 on the desired morning*

### SPECIALTY DINING\*

6:00pm - 10:00pm	Bistrot La Bohème**	8 Mid
------------------	---------------------	-------

6:00pm - 10:00pm	Ocean Cay**	16 Mid
------------------	-------------	--------

6:00pm - 10:00pm	Butcher's Cut**	16 Mid
------------------	-----------------	--------

6:00pm - 10:00pm	Sushi Bar & Pan Asian Restaurant**	16 Mid
------------------	------------------------------------	--------

6:00pm - 10:00pm	Teppanyaki by Roy Yamaguchi**	16 Mid
------------------	-------------------------------	--------

*\*\*charges apply*

*For reservations book through MSC for Me or contact the Specialty Restaurant Manager by dialing 6100.*

*Cancellations must take place at least 24 hours before the previously arranged booking time, or a penalty charge of \$5 per person will be applied.*

### BARS & LOUNGES

Times	Location	Deck
-------	----------	------

6:30am - 12:30am	Seaside Bar	5 Mid
------------------	-------------	-------

5:00pm - Midnight	Shine Bar	6 Mid
-------------------	-----------	-------

8:00am - 1:00am	Venchi Cioccolateria & Coffee Bar	6 Mid
-----------------	-----------------------------------	-------

12noon - 8:00pm	Venchi Gelateria & Creperie	7 Aft
-----------------	-----------------------------	-------

8:00am - 2:00am	South Beach Pool Bar	7 Aft
-----------------	----------------------	-------

From 10:00pm	Garage Club	7 Aft
--------------	-------------	-------

5:00pm - Midnight	Champagne Bar	7 Mid
-------------------	---------------	-------

From 4:00pm	Miami Casino	7 Fwd
-------------	--------------	-------

5:00pm - 2:00am	Sports Bar	8 Fwd
-----------------	------------	-------

8:00am - 1:00am	Seaview Lounge	8 Fwd
-----------------	----------------	-------

6:00pm - 10:30pm	Bistrot La Bohème & Bar	8 Mid
------------------	-------------------------	-------

5:00pm - Midnight	Wine & Cocktails	16 Mid
-------------------	------------------	--------

From 8:00am	Miami Beach Bar	16 Aft
-------------	-----------------	--------

11:00am - 9:00pm	Jungle Bar	19 Mid
------------------	------------	--------

10:00am - 7:00pm	Aurea Bar	19 Mid
------------------	-----------	--------

12noon - 10:00pm	Miramar Bar	19 Mid
------------------	-------------	--------

### WELLBEING & MSC AUREA SPA

9:00am - 9:00pm	Thermal Area	8 Fwd
-----------------	--------------	-------

9:00am - 9:00pm	MSC Aurea SPA	8 Fwd
-----------------	---------------	-------

6:00am - 10:00pm	MSC Gym by Technogym®	8 Fwd
------------------	-----------------------	-------

### ENTERTAINMENT AREA

10:00am - 1:00pm	Zip Line**	18 Mid
------------------	------------	--------

*MSC Staff cannot take responsibility for your personal belongings while using the zip line*

*\*\*charges apply*

10:00am - 6:00pm	Forest Aquaventure Park*	18 Mid
------------------	--------------------------	--------

*\*Weather permitting*

7:00am - 9:00pm	Sports Court	20 Mid
-----------------	--------------	--------

8:00am - 8:00pm	South Beach Pool	7 Aft
-----------------	------------------	-------

8:00am - 9:00pm	Miami Beach Pool	16 Aft
-----------------	------------------	--------

7:30am - 10:00pm	Jungle Pool Lounge	18 Mid
------------------	--------------------	--------

24/7	Virtual Games Arcade	7 Aft
------	----------------------	-------

24/7	Library	7 Aft
------	---------	-------

2:00pm - Midnight	Amusement park (Cinema 5D, F1 Simulator, Board Games and Playing Cards & Bowling)	7 Aft
-------------------	---	-------

### YOUTH AREA

9:00am - 1:00pm	Baby Club	18 Mid
-----------------	-----------	--------

3:30pm - 11:00pm	Mini & Juniors	18 Mid
------------------	----------------	--------

4:00pm - 6:00pm	Young & Teens Club	18 Mid
-----------------	--------------------	--------

8:00pm - Midnight	Lego® Family Fun	18 Mid
-------------------	------------------	--------

### MSC VOYAGERS CLUB INFOPOINT - CRUISE CONSULTANT

6:00pm - 9:00pm	Future Cruise Desk	5 Mid
-----------------	--------------------	-------

### MEDICAL CENTER Tel: 2156

9:00am - 12noon	Medical Centre	4 Fwd
-----------------	----------------	-------

### MEDICAL EMERGENCY: TEL 115

Mid = midship; Fwd = forward ship; Aft = aft ship.

MSC Boutiques, Photo gallery and Casino Opening Hours are according to local regulations. Please see venue for specific opening hours.

# DAILY PROGRAM

ENG

## MSC Seaside



26°C / 82 °F min  
29°C / 88 °F max



7:30am Arrival time  
3:15pm Last tender boat to the ship  
4:00pm Departure time



7:01am Sunrise  
6:12pm Sunset



Next Port:  
Cozumel, January 17, 2018

### Nautical information

Upon arrival we will begin the anchoring maneuvers on the Western side of the Island of Grand Cayman at a distance of about 1 nautical mile from the marina. Our cruise will continue after departure on a Western course during the evening at a speed of about 20Knts.

### Getting off the ship

Please note that upon arrival in Georgetown, disembarkation will not commence until we receive permission from the local authorities. Please remember to carry a government issued photo ID/ Passport with you and to show your Cruise Card at the gangway exit and entry when you return.

## WELCOME TO GEORGETOWN Tuesday January 16, 2018

### IMPORTANT INFORMATION ABOUT DISEMBARKATION PROCEDURES BY TENDER

Please note that MSC Seaside will remain at anchor today. Disembarkation will be carried out via a continuous tender boat service, which will take you from ship to shore and vice versa. To use this complimentary service, please pick up your tender ticket number from the Gallery next to the Sports Bar, deck 8 fwd, from 7:30am. Guests who have purchased one of our shore excursions do not need to collect a tender ticket and will be accompanied from their meeting point to the gangway by staff.

Disembarkation with tender boats takes longer than the ordinary disembarking procedures. Therefore, to ensure a quick and smooth disembarkation, we ask you to follow our instructions and wait comfortably in any of the lounges or on the open decks until your tender ticket number is called (over the public address system). The duration of the disembarkation will also depend on weather conditions.

The last tender boat from the ship to Georgetown will be at 2:00pm.

The last tender boat from Georgetown to the ship will be at 3:15pm.

Distance from Georgetown to Cozumel : 328 nautical miles.



## DISCOVER GEORGETOWN!

### MSC BIKE ADVENTOURS


Book your bike tour now!

The bike team are available on deck 6!

6:00pm-8:00pm (deck 6)

LAST TENDER TO THE SHIP AT **3:15pm**

### MSC Excursions

	Deck 6 (Mid) 4:30pm - 11:00pm	Deck 8 (Mid) 5:30pm - 10:00pm
Miss the ship?	Onboard Satellite phone 00870773308290/1	
MSC Agency in George Town	BODDEN SHIPPING AGENCY LTD CITRUS GROVE FIFTH FLOOR 106 GORING AVENUE GRAND CAYMAN Phone +1 345 949 625 4	

The seven-mile beach is the best known of the beaches on the Cayman Islands, but also the busiest. Less crowded beaches can be found along the Northern Coast of Grand Cayman and at the South Western end of Cayman Brac. The Caymans are one of the best diving locations in the Caribbean. The traditional West Indian culture is more evident on Little Cayman and Cayman Brac. Lining Georgetown's harbor, is a collection of shops and offices housed in distinctive 18th Century architecture. There are buildings trimmed with wooden gingerbread, a contrast to the condominiums, satellite dishes and modern glass government administration building, also seen in the Cayman's capital. The streets of Georgetown come alive with the arrival of the cruise ships. There are museums and a fort to visit in Georgetown as well as some fine restaurants and shopping.

## EXCURSIONS

### THE BEST OF BEAUTIFUL NASSAU!

Discover the charms of Nassau with our well organised shore excursions.

We offer a wide variety of tours for all tastes. Book now!

Excursion Office, deck 6 & 8.

### MAKE THE MOST OF YOUR TIME ASHORE

A warm welcome aboard from everyone at the Excursion Office! There are so many places to visit during your cruise, you're spoilt for choice. If you're unsure about which tours to book, come and visit us on deck 6. Enjoy your cruise!

### BOOK NOW TRULY EXCLUSIVE

Further information and full assistance is available from the Excursion Office on decks 6 & 8.

### EXPERIENCE THE BEST IN EVERY DESTINATION

For a smooth, safe and sociable trip ashore, book your place on our excursions. With carefully planned itineraries, expert guides and priority access to sights, you'll save time and savour every moment.

Excursion Office, decks 6 & 8.

## HIGHLIGHTS ENTERTAINMENT

Suggested dress tonight: Smart Casual

### THEATER SHOW: FLY

Who doesn't love a Broadway show? Enjoy this toe-tapping, finger-snapping spectacular, filled with singing and dancing to the memorable music of great American composers.

7:00pm, 8:15pm & 9:30pm, Metropolitan Theater,  
decks 6 & 7 (Fwd)

### THEATRE SHOW: CLASICOS LATINOS

10:30pm, Metropolitan Theater, decks 6 & 7 (Fwd)  
No reservation required

### THEATER COMEDY SHOW: BEERPROV

Unscripted Comedy at Sea.  
Brand new jokes each and every night, find out yourself why BeerProv has been called "the funniest live comedy show you'll ever see"

11:15pm, Metropolitan Theater, decks 6 & 7 (Fwd)  
No reservation required



## FOOD & BEVERAGE

### SPECIALITY DINING PACKAGE

Two respected restaurant brands, two refined culinary experiences.

Butcher's Cut Steakhouse and Sushi Bar & Pan Asian Restaurant.

Guests who want to reserve a dining experience on board are invited to visit the restaurant or contact the Specialty Restaurant Manager dialing 6100.

### NAME THAT COUNTRY TUNE

How well do you know your tunes?

9:00pm, Piazza Grande, deck 6, Fwd

### KARAOKE MADNESS

Sing the hits like they've never been sung before, to the amazement - or amusement - of friends and fellow guests. It's your time to shine.


10:00pm, Miami Beach Pool, deck 16, Aft


### COUNTRY & WESTERN PARTY


Join your Cruise Staff and fellow Guests for an evening of dancing!

10:30pm, Atrium, decks 5, 6, 7 & 8 Mid

## Important to know

 **EXPRESS WALK-OFF DISEMBARKATION IN MIAMI**  
We remind all our guests that the "Express Walk off" program allows you to leave the ship immediately after clearance is received from the local authorities in Miami provided you can carry ashore your own luggage without assistance from the ship's personnel. Please DO NOT leave your luggage outside your stateroom the night before arrival in Miami and disregard any luggage tags that will be delivered. On the morning of disembarkation, please make your way to the gangway and wait comfortably for the clearance announcement. Please have your documentation and Cruise Card handy. Further information will be provided in the Disembarkation Program at the end of the cruise.

 **POOL CAUTION**  
Kindly read the health notices at the Pool and Spa Pool areas and always shower before entering a swimming pool. Please do not dive, jump or run around the pools. Children under 16 must be accompanied by an adult. No nappies are permitted in any pool or spa.

 **THEATRE SHOW RESERVATION**  
Shows will be presented throughout the cruise. Reservation is compulsory and available from the day before the performance on the interactive screens, the MSC for Me App and stateroom television. We kindly request Guests with reservation to be seated 5 minutes prior to show time. At 5 minutes prior to show time, any available seats will be released for guests without reservations.



## Opening hours

### BREAKFAST, DINING & SNACKS

Times	Location	Deck
<b>BISCAYNE BAY BUFFET &amp; PIZZA</b>		<b>16 Mid</b>

Beverage Station available 20h per day. Coffee, tea, water, ice & creamers

#### EARLY BIRD BREAKFAST

6:30am - 7:00am	Marketplace Buffet	8 Aft
-----------------	--------------------	-------

#### BREAKFAST

8:00am - 9:30am	Seashore Restaurant	5 Aft
-----------------	---------------------	-------

7:00am - 11:00am	Marketplace Buffet	8 Aft
------------------	--------------------	-------

8:00am - 11:00am	Biscayne Bay Buffet & Pizza	16 Mid
------------------	-----------------------------	--------

#### LUNCH

12noon - 3:00pm	Marketplace Buffet	8 Aft
-----------------	--------------------	-------

#### DINNER

5:30pm (Dinner)	Ipanema Restaurant	6 Aft
-----------------	--------------------	-------

6:00pm (Dinner)	Seashore Restaurant	5 Aft
-----------------	---------------------	-------

6:30pm (Dinner)	Marketplace Restaurant	8 Aft
-----------------	------------------------	-------

7:45pm (Dinner)	Ipanema Restaurant	6 Aft
-----------------	--------------------	-------

8:30pm (Dinner)	Seashore Restaurant	5 Aft
-----------------	---------------------	-------

9:00pm (Dinner)	Marketplace Restaurant	8 Aft
-----------------	------------------------	-------

9:45pm (Dinner)	Ipanema Restaurant	6 Aft
-----------------	--------------------	-------

In order to offer you the best service, please respect the above times. Restaurant doors will close 15 min after the start of each dinner sitting.

6:00pm - 10:00pm myChoice Dining\* Seashore Restaurant 5 Aft

\*Aurea & Wellness Guests only - For bookings and full information, drop by the myChoice Reservation Desk, Seashore Restaurant deck 5 (Aft), from 12noon to 3:30pm and from 6:00pm to 7:00pm or simply call 6134 from your stateroom during reservation hours.

6:30pm - 9:30pm	Biscayne Bay Buffet & Pizza	16 Mid
-----------------	-----------------------------	--------

#### Additional dining options

12noon - 3:00pm Pizzeria	Marketplace Buffet	8 Aft
--------------------------	--------------------	-------

12noon - 3:00pm Grill	Marketplace Buffet	8 Aft
-----------------------	--------------------	-------

2:30pm - 5:30pm Grill	Biscayne Bay Buffet & Pizza	16 Mid
-----------------------	-----------------------------	--------

2:30pm - Midnight Pizzeria	Biscayne Bay Buffet & Pizza	16 Mid
----------------------------	-----------------------------	--------

2:30pm - 5:30pm Grab & Go	Biscayne Bay Buffet & Pizza	16 Mid
---------------------------	-----------------------------	--------

10:00pm - 2:00am Late Night Snacks	Biscayne Bay Buffet & Pizza	16 Mid
------------------------------------	-----------------------------	--------

#### Pizza Delivery\*

\*charge apply For reservation please call 2589 from 6:00pm to Midnight

#### Room Service 24/7 Tel: 2589

For breakfast (from 7:30 to 10:00) please fill up the doorknob menu and place it outside your stateroom door before 2:00 on the desired morning

#### SPECIALTY DINING\*

6:00pm - 10:00pm	Bistrot La Bohème**	8 Mid
------------------	---------------------	-------

6:00pm - 10:00pm	Ocean Cay**	16 Mid
------------------	-------------	--------

6:00pm - 10:00pm	Butcher's Cut**	16 Mid
------------------	-----------------	--------

6:00pm - 10:00pm	Sushi Bar & Pan Asian Restaurant**	16 Mid
------------------	------------------------------------	--------

6:00pm - 10:00pm	Teppanyaki by Roy Yamaguchi**	16 Mid
------------------	-------------------------------	--------

\*\*charges apply

For reservations book through MSC for Me or contact the Specialty Restaurant Manager by dialing 6100.

Cancellations must take place at least 24 hours before the previously arranged booking time, or a penalty charge of \$5 per person will be applied.

### BARS & LOUNGES

Times	Location	Deck
6:30am - 12:30am	Seaside Bar	5 Mid

5:00pm - Midnight	Shine Bar	6 Mid
-------------------	-----------	-------

8:00am - 1:00am	Venchi Cioccolateria & Coffee Bar	6 Mid
-----------------	-----------------------------------	-------

12noon - 8:00pm	Venchi Gelateria & Creperie	7 Aft
-----------------	-----------------------------	-------

8:00am - 2:00am	South Beach Pool Bar	7 Aft
-----------------	----------------------	-------

From 10:00pm	Garage Club	7 Aft
--------------	-------------	-------

10:00pm - 1:00am	Haven Lounge	7 Aft
------------------	--------------	-------

5:00pm - Midnight	Champagne Bar	7 Mid
-------------------	---------------	-------

From 6:00pm	Miami Casino	7 Fwd
-------------	--------------	-------

5:00pm - 2:00am	Sports Bar	8 Fwd
-----------------	------------	-------

8:00am - 1:00am	Seaview Lounge	8 Fwd
-----------------	----------------	-------

6:00pm - 10:30pm	Bistrot La Bohème & Bar	8 Mid
------------------	-------------------------	-------

5:00pm - Midnight	Wine & Cocktails	16 Mid
-------------------	------------------	--------

From 8:00am	Miami Beach Bar	16 Aft
-------------	-----------------	--------

11:00am - 9:00pm	Jungle Bar	19 Mid
------------------	------------	--------

10:00am - 7:00pm	Aurea Bar	19 Mid
------------------	-----------	--------

12noon - 10:00pm	Miramar Bar	19 Mid
------------------	-------------	--------

#### WELLBEING & MSC AUREA SPA

9:00am - 9:00pm	Thermal Area	8 Fwd
-----------------	--------------	-------

9:00am - 9:00pm	MSC Aurea SPA	8 Fwd
-----------------	---------------	-------

6:00am - 10:00pm	MSC Gym by Technogym®	8 Fwd
------------------	-----------------------	-------

#### ENTERTAINMENT AREA

10:00am - 1:00pm	Zip Line**	18 Mid
------------------	------------	--------

MSC Staff cannot take responsibility for your personal belongings while using the zip line

\*\*charges apply

10:00am - 6:00pm	Forest Aquaventure Park*	18 Mid
------------------	--------------------------	--------

\*Weather permitting

7:00am - 9:00pm	Sports Court	20 Mid
-----------------	--------------	--------

8:00am - 8:00pm	South Beach Pool	7 Aft
-----------------	------------------	-------

8:00am - 9:00pm	Miami Beach Pool	16 Aft
-----------------	------------------	--------

7:30am - 10:00pm	Jungle Pool Lounge	18 Mid
------------------	--------------------	--------

24/7	Virtual Games Arcade	7 Aft
------	----------------------	-------

24/7	Library	7 Aft
------	---------	-------

2:00pm - Midnight	Amusement park (Cinema 5D, F1 Simulator, Board Games and Playing Cards & Bowling)	7 Aft
-------------------	---	-------

#### YOUTH AREA

9:00am - 1:00pm	Baby Club	18 Mid
-----------------	-----------	--------

3:30pm - 11:00pm	Mini & Juniors	18 Mid
------------------	----------------	--------

4:00pm - 6:00pm	Young & Teens Club	18 Mid
-----------------	--------------------	--------

8:00pm - Midnight	Lego® Family Fun	18 Mid
-------------------	------------------	--------

#### MSC VOYAGERS CLUB INFOPOINT - CRUISE CONSULTANT

9:00am - 11:00am	Future Cruise Desk	5 Mid
------------------	--------------------	-------

5:30pm - 8:30pm	Medical Center	4 Fwd
-----------------	----------------	-------

#### MEDICAL CENTER Tel: 2156

9:00am - 12noon	Medical Center	4 Fwd
-----------------	----------------	-------

#### MEDICAL EMERGENCY: TEL 115

Mid = midship; Fwd = forward ship; Aft = aft ship.

MSC Boutiques, Photo gallery and Casino Opening Hours are according to local regulations. Please see venue for specific opening hours.

# DAILY PROGRAM

ENG

## MSC Seaside



24°C / 78 °F min  
29°C / 88 °F max



10:00am Arrival time  
5:30pm All aboard  
6:00pm Departure time



7:23am Sunrise  
6:27pm Sunset



Next Port:  
Nassau, January 19, 2018

## WELCOME TO COZUMEL

Wednesday January 17, 2018

"How did it sound  
The dress of Cozumel Sea  
The color of the sun all  
over the body  
Mexico Acquires Skin."

Luis Miguel

#### Nautical information

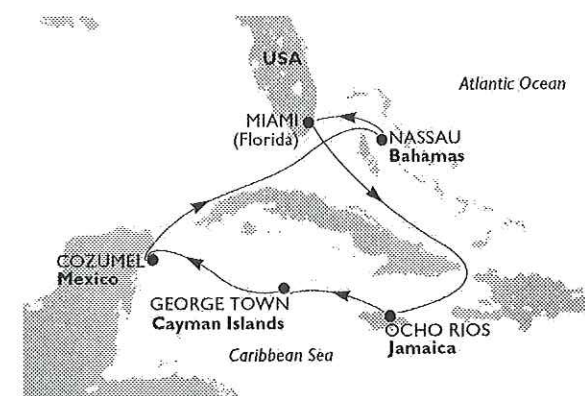
In the morning we will enter the passage that separates Cozumel Island from the Yucatan Peninsula which has a current in a Northerly direction throughout the year. The ship will dock on the Punta Langosta pier, situated near the capitol city of San Miguel de Cozumel. Once our departure maneuvers are completed and the pilot has disembarked, we will continue cruising along the Western coast of the island for about an hour and a half.

#### CUSTOMS

#### AGRICULTURE REGULATIONS

Please note that, due to Agriculture regulations and strict requirements of the local Authorities, it is prohibited to take ashore any kind of food, plants, seeds or shells and commercial merchandise. Heavy penalties will apply to guests found with these prohibited items.

Getting off the ship Please note that upon arrival in Cozumel, disembarkation will not commence until we receive permission from the local authorities. Please remember to carry a government issued photo ID/ Passport with you and to show your Cruise Card at the gangway exit and entry when you return.



Distance from Cozumel to Nassau : 708 nautical miles.





## DISCOVER COZUMEL!

Cozumel is located in the Caribbean Sea, nearly 70 kilometers South of Cancún City in the state of Quintana Roo. It is known to be one of the biggest islands in Mexico, (population 65,000), and is also one of the most picturesque and sophisticated because of its nice weather and beautiful coastline. It is also a favorite spot for sun, sea and nature lovers everywhere. Once inhabited by the Mayans, the island has been conquered by different civilizations a few decades ago, and it was still unknown to tourism. Now every year, thousands of people visit and enjoy Cozumel. Thanks to its beautiful sea floors, abundant coral reefs and the variety of its colorful fish, this exotic destination is also loved by divers of all levels. The currency is the Mexican Peso.

### MSC BIKE ADVENTOURS

Book your bike tour now!

The bike team are available on deck 6 !

**6:00pm-8:00pm (deck 6)**

ALL ABOARD AT **5:30pm**

### MSC Excursions

	Deck 6 (Mid) <b>8:00am - 9:00am</b> <b>6:00pm - 11:00pm</b>	Deck 8 (Mid) <b>8:00am - 9:30am</b> <b>6:00pm - 10:00pm</b>
<b>Miss the ship?</b>	<b>Onboard Satellite phone</b> 00870773308290/1	
<b>MSC Agency in Cozumel</b>	<b>Agencia Consignataria del Sureste S.a. de C.v.</b> Calle 6 Norte Entre 10 Y 15 AV. Aparado 161 Cozumel, Q. Roo Mexico 77600 <b>Tel +52 987 872 377 9 / +52 987 872 444 3</b>	

## EXCURSIONS

### MAKE IT A DAY TO REMEMBER!

Have a wonderful day ashore discovering the beauty of Nassau.

Still a few places available from the Excursion Office, deck 6 & 8.

### NAS19 – BALMORAL ISLAND BEACH DAY & STINGRAY ENCOUNTER

Taking you to visit a private island with a stunning beach and giving you a chance to interact with stingrays, this half|day outing seeks to deliver the stuff of which fond memories are made.

### NAS18 – BALMORAL ISLAND BEACH DAY

If your idea of holiday heaven is a private island with a stunning beach, this trip to Balmoral Island – a tiny islet in the coastal waters of New Providence – will be perfect for you.

### EXPERIENCE THE BEST IN EVERY DESTINATION

For a smooth, safe and sociable trip ashore, book your place on our excursions. With carefully planned itineraries, expert guides and priority access to sights, you'll save time and savour every moment.

Excursion Office, decks 6 & 8.

## HIGHLIGHTS ENTERTAINMENT

### THEATRE SHOW: FRANK FOREVER

A tribute to the king of cool

**7:00pm, Metropolitan Theater, decks 6 & 7 (Fwd)**

### THEATER SHOW: BUTTERFLIES

All the drama, emotion and spectacle of that most Italian of art forms, the opera, come together in this condensed version of Puccini's *Madama Butterfly*. In an original production which promises to dazzle and delight all ages.

**8:15pm & 9:30pm, Metropolitan Theater, decks 6 & 7 (Fwd)**

### THEATRE SHOW: 'O SOLE MIO

**10:40pm, Metropolitan Theater, decks 6 & 7 (Fwd)**  
No reservation required

### THEATER COMEDY SHOW: BEERPROV

Unscripted Comedy at Sea.  
Brand new jokes each and every night, find out yourself why BeerProv has been called "the funniest live comedy show you'll ever see"

**11:15pm, Metropolitan Theater, decks 6 & 7 (Fwd)**  
No reservation required



## FOOD & BEVERAGE

### TEPPANYAKI BY ROY YAMAGUCHI

The modern East-West cooking style of Japanese cuisine will come to life via four Teppanyaki grills. With a modern twist on Asian cuisine, guests can sit at the cooking stations to watch their delicious Japanese dishes come to life in front of their eyes. Expert chefs will cook with flare on an open grill – a visual spectacle and feast for the senses with flames and sizzling ingredients all coming together to form flavorful dishes.

### ASIAN FUSION BY ROY YAMAGUCHI

The à la carte restaurant will serve gourmet Asian creations in a stylish venue with incredible sea views.

### SUSHI BY ROY YAMAGUCHI

The Sushi Bar will serve the freshest sushi, sashimi and tempura.

*For reservations, book through MSC for Me or contact the Specialty Restaurant Manager by dialing 6100.*

Suggested dress tonight: Smart Casual

### MSCINEMA AL FRESCO:

Pirates Of The Caribbean - Dead Men Tell No Tales

Starring: Johnny Depp & Geoffrey Rush

Rated: PG 13

Duration: 2h 9min

**6:45pm & 11:00pm, Miami Beach Pool, deck 16 Aft**

### BINGO

Any bingo lovers on board? Fantastic. We just wanted to give you the heads up for the big heads down. The numbers will be drawn soon!

**10:30pm, Haven Lounge, deck 7, Aft**

### 70'S PARTY

The swinging 70s are calling, so prepare for a nostalgia trip to remember. So slip on some flares, put some flowers in your hair and prepare to get groovy!

**11:00pm, Haven Lounge, deck 7, Aft**

## Important to know

### 24/7 ONBOARD LIBRARY SERVICE

Take advantage of our wide range of titles available 24/7 in the Library on (deck 7 Aft) and simply return any borrowed books by 12:00 on the day before you disembark.

### EXPRESS WALK OFF DISEMBARKATION IN MIAMI

We remind all our guests that the "Express Walk off" program allows you to leave the ship immediately after clearance is received from the local authorities in Miami provided you can carry ashore your own luggage without assistance from the ship's personnel. Please DO NOT leave your luggage outside your stateroom the night before arrival in Miami and disregard any luggage tags that will be delivered. On the morning of disembarkation, please make your way to the gangway and wait comfortably for the clearance announcement. Please have your documentation and Cruise Card handy. Further information will be provided in the Disembarkation Program at the end of the cruise.

### THEATRE SHOW RESERVATION

Shows will be presented throughout the cruise. Reservation is compulsory and available from the day before the performance on the interactive screens, the MSC for Me App and stateroom television. We kindly request Guests with reservation to be seated 5 minutes prior to show time. At 5 minutes prior to show time, any available seats will be released for guests without reservations.



## Opening hours

### BREAKFAST, DINING & SNACKS

Times	Location	Deck
<b>BISCAYNE BAY BUFFET &amp; PIZZA</b>		<b>16 Mid</b>

Beverage Station available 20h per day. Coffee, tea, water, ice & creamers

### EARLY BIRD BREAKFAST

6:30am - 7:00am	Marketplace Buffet	8 Aft
-----------------	--------------------	-------

### BREAKFAST

8:00am - 9:30am	Seashore Restaurant	5 Aft
-----------------	---------------------	-------

7:00am - 11:00am	Marketplace Buffet	8 Aft
------------------	--------------------	-------

8:00am - 11:00am	Biscayne Bay Buffet & Pizza	16 Mid
------------------	-----------------------------	--------

12:30pm - 3:30pm	Biscayne Bay Buffet & Pizza	16 Mid
------------------	-----------------------------	--------

12:30pm - 3:30pm	Biscayne Bay Buffet & Pizza	16 Mid
------------------	-----------------------------	--------

12:30pm - 3:30pm	Biscayne Bay Buffet & Pizza	16 Mid
------------------	-----------------------------	--------

12:30pm - 3:30pm	Biscayne Bay Buffet & Pizza	16 Mid
------------------	-----------------------------	--------

12:30pm - 3:30pm	Biscayne Bay Buffet & Pizza	16 Mid
------------------	-----------------------------	--------

12:30pm - 3:30pm	Biscayne Bay Buffet & Pizza	16 Mid
------------------	-----------------------------	--------

12:30pm - 3:30pm	Biscayne Bay Buffet & Pizza	16 Mid
------------------	-----------------------------	--------

12:30pm - 3:30pm	Biscayne Bay Buffet & Pizza	16 Mid
------------------	-----------------------------	--------

12:30pm - 3:30pm	Biscayne Bay Buffet & Pizza	16 Mid
------------------	-----------------------------	--------

12:30pm - 3:30pm	Biscayne Bay Buffet & Pizza	16 Mid
------------------	-----------------------------	--------

12:30pm - 3:30pm	Biscayne Bay Buffet & Pizza	16 Mid
------------------	-----------------------------	--------

12:30pm - 3:30pm	Biscayne Bay Buffet & Pizza	16 Mid
------------------	-----------------------------	--------

12:30pm - 3:30pm	Biscayne Bay Buffet & Pizza	16 Mid
------------------	-----------------------------	--------

12:30pm - 3:30pm	Biscayne Bay Buffet & Pizza	16 Mid
------------------	-----------------------------	--------

12:30pm - 3:30pm	Biscayne Bay Buffet & Pizza	16 Mid
------------------	-----------------------------	--------

12:30pm - 3:30pm	Biscayne Bay Buffet & Pizza	16 Mid
------------------	-----------------------------	--------

12:30pm - 3:30pm	Biscayne Bay Buffet & Pizza	16 Mid
------------------	-----------------------------	--------

12:30pm - 3:30pm	Biscayne Bay Buffet & Pizza	16 Mid
------------------	-----------------------------	--------

12:30pm - 3:30pm	Biscayne Bay Buffet & Pizza	16 Mid
------------------	-----------------------------	--------

12:30pm - 3:30pm	Biscayne Bay Buffet & Pizza	16 Mid
------------------	-----------------------------	--------

12:30pm - 3:30pm	Biscayne Bay Buffet & Pizza	16 Mid
------------------	-----------------------------	--------

12:30pm - 3:30pm	Biscayne Bay Buffet & Pizza	16 Mid
------------------	-----------------------------	--------

12:30pm - 3:30pm	Biscayne Bay Buffet & Pizza	16 Mid
------------------	-----------------------------	--------

12:30pm - 3:30pm	Biscayne Bay Buffet & Pizza	16 Mid
------------------	-----------------------------	--------

12:30pm - 3:30pm	Biscayne Bay Buffet & Pizza	16 Mid
------------------	-----------------------------	--------

12:30pm - 3:30pm	Biscayne Bay Buffet & Pizza	16 Mid
------------------	-----------------------------	--------

12:30pm - 3:30pm	Biscayne Bay Buffet & Pizza	16 Mid
------------------	-----------------------------	--------

12:30pm - 3:30pm	Biscayne Bay Buffet & Pizza	16 Mid
------------------	-----------------------------	--------

12:30pm - 3:30pm	Biscayne Bay Buffet & Pizza	16 Mid
------------------	-----------------------------	--------

12:30pm - 3:30pm	Biscayne Bay Buffet & Pizza	16 Mid
------------------	-----------------------------	--------

12:30pm - 3:30pm	Biscayne Bay Buffet & Pizza	16 Mid
------------------	-----------------------------	--------

12:30pm - 3:30pm	Biscayne Bay Buffet & Pizza	16 Mid
------------------	-----------------------------	--------

12:30pm - 3:30pm	Biscayne Bay Buffet & Pizza	16 Mid
------------------	-----------------------------	--------

12:30pm - 3:30pm	Biscayne Bay Buffet & Pizza	16 Mid
------------------	-----------------------------	--------

12:30pm - 3:30pm	Biscayne Bay Buffet & Pizza	16 Mid
------------------	-----------------------------	--------

12:30pm - 3:30pm	Biscayne Bay Buffet & Pizza	16 Mid
------------------	-----------------------------	--------

12:30pm - 3:30pm	Biscayne Bay Buffet & Pizza	16 Mid
------------------	-----------------------------	--------

12:30pm - 3:30pm	Biscayne Bay Buffet & Pizza	16 Mid
------------------	-----------------------------	--------

12:30pm - 3:30pm	Biscayne Bay Buffet & Pizza	16 Mid
------------------	-----------------------------	--------

12:30pm - 3:30pm	Biscayne Bay Buffet & Pizza	16 Mid
------------------	-----------------------------	--------

12:30pm - 3:30pm	Biscayne Bay Buffet & Pizza	16 Mid
------------------	-----------------------------	--------

12:30pm - 3:30pm	Biscayne Bay Buffet & Pizza	16 Mid
------------------	-----------------------------	--------

12:30pm - 3:30pm	Biscayne Bay Buffet & Pizza	16 Mid
------------------	-----------------------------	--------

12:30pm - 3:30pm	Biscayne Bay Buffet & Pizza	16 Mid
------------------	-----------------------------	--------

12:30pm - 3:30pm	Biscayne Bay Buffet & Pizza	16 Mid
------------------	-----------------------------	--------

12:30pm - 3:30pm	Biscayne Bay Buffet & Pizza	16 Mid
------------------	-----------------------------	--------

12:30pm - 3:30pm	Biscayne Bay Buffet & Pizza	16 Mid
------------------	-----------------------------	--------

12:30pm - 3:30pm	Biscayne Bay Buffet & Pizza	16 Mid
------------------	-----------------------------	--------

12:30pm - 3:30pm	Biscayne Bay Buffet & Pizza	16 Mid
------------------	-----------------------------	--------

12:30pm - 3:30pm	Biscayne Bay Buffet & Pizza	16 Mid
------------------	-----------------------------	--------

12:30pm - 3:30pm	Biscayne Bay Buffet & Pizza	16 Mid
------------------	-----------------------------	--------

12:30pm - 3:30pm	Biscayne Bay Buffet & Pizza	16 Mid
------------------	-----------------------------	--------

12:30pm - 3:30pm	Biscayne Bay Buffet & Pizza	16 Mid
------------------	-----------------------------	--------

12:30pm - 3:30pm	Biscayne Bay Buffet & Pizza	16 Mid
------------------	-----------------------------	--------

12:30pm - 3:30pm	Biscayne Bay Buffet & Pizza	16 Mid
------------------	-----------------------------	--------

12:30pm - 3:30pm	Biscayne Bay Buffet & Pizza	16 Mid
------------------	-----------------------------	--------

### BARS & LOUNGES

Times	Location	Deck
6:30am - 12:30am	Seaside Bar	5 Mid

5:00pm - Midnight	Shine Bar	6 Mid
-------------------	-----------	-------

8:00am - 1:00am	Venchi Cioccolateria & Coffee Bar	6 Mid
-----------------	-----------------------------------	-------

10:00am - 8:00pm	Venchi Gelateria & Creperie	7 Aft
------------------	-----------------------------	-------

8:00am - 2:00am	South Beach Pool Bar	7 Aft
-----------------	----------------------	-------

From 10:00pm	Garage Club	7 Aft
--------------	-------------	-------

7:00pm - 12:30am	Haven Lounge	7 Aft
------------------	--------------	-------

5:00pm - Midnight	Champagne Bar	7 Mid
-------------------	---------------	-------

From 10:00am	Miami Casino	7 Fwd
--------------	--------------	-------

1:00pm - 2:00am	Sports Bar	8 Fwd
-----------------	------------	-------

8:00am - 1:00am	Seaview Lounge	8 Fwd
-----------------	----------------	-------

6:00pm - 10:30pm	Bistrot La Bohème & Bar	8 Mid
------------------	-------------------------	-------

12:00pm - 2:30pm	Wine & Cocktails	16 Mid
------------------	------------------	--------

5:00pm - Midnight		16 Mid
-------------------	--	--------

From 8:00am	Miami Beach Bar	16 Aft
-------------	-----------------	--------

9:00am - 8:30pm	Jungle Bar	19 Mid
-----------------	------------	--------

10:00am - 7:00pm	Aurea Bar	19 Mid
------------------	-----------	--------

9:00am - 10:00pm	Miramar Bar	19 Mid
------------------	-------------	--------

9:00am - 10:00pm	Miramar Bar	19 Mid
------------------	-------------	--------

9:00am - 10:00pm	Miramar Bar	19 Mid
------------------	-------------	--------

9:00am - 10:00pm	Miramar Bar	19 Mid
------------------	-------------	--------

9:00am - 10:00pm	Miramar Bar	19 Mid
------------------	-------------	--------

9:00am - 10:00pm	Miramar Bar	19 Mid
------------------	-------------	--------

9:00am - 10:00pm	Miramar Bar	19 Mid
------------------	-------------	--------

9:00am - 10:00pm	Miramar Bar	19 Mid
------------------	-------------	--------

9:00am - 10:00pm	Miramar Bar	19 Mid
------------------	-------------	--------

9:00am - 10:00pm	Miramar Bar	19 Mid
------------------	-------------	--------

9:00am - 10:00pm	Miramar Bar	19 Mid
------------------	-------------	--------

9:00am - 10:00pm	Miramar Bar	19 Mid
------------------	-------------	--------

9:00am - 10:00pm	Miramar Bar	19 Mid
------------------	-------------	--------

9:00am - 10:00pm	Miramar Bar	19 Mid
------------------	-------------	--------

9:00am - 10:00pm	Miramar Bar	19 Mid
------------------	-------------	--------

9:00am - 10:00pm	Miramar Bar	19 Mid
------------------	-------------	--------

9:00am - 10:00pm	Miramar Bar	19 Mid
------------------	-------------	--------

9:00am - 10:00pm	Miramar Bar	19 Mid
------------------	-------------	--------

9:00am - 10:00pm	Miramar Bar	19 Mid
------------------	-------------	--------

9:00am - 10:00pm	Miramar Bar	19 Mid
------------------	-------------	--------

9:00am - 10:00pm	Miramar Bar	19 Mid
------------------	-------------	--------

9:00am - 10:00pm	Miramar Bar	19 Mid
------------------	-------------	--------

9:00am - 10:00pm	Miramar Bar	19 Mid
------------------	-------------	--------

9:00am - 10:00pm	Miramar Bar	19 Mid
------------------	-------------	--------

9:00am - 10:00pm	Miramar Bar	19 Mid
------------------	-------------	--------

9:00am - 10:00pm	Miramar Bar	19 Mid
------------------	-------------	--------

9:00am - 10:00pm	Miramar Bar	19 Mid
------------------	-------------	--------

9:00am - 10:00pm	Miramar Bar	19 Mid
------------------	-------------	--------

9:00am - 10:00pm	Miramar Bar	19 Mid
------------------	-------------	--------

9:00am - 10:00pm	Miramar Bar	19 Mid
------------------	-------------	--------

9:00am - 10:00pm	Miramar Bar	19 Mid
------------------	-------------	--------

9:00am - 10:00pm	Miramar Bar	19 Mid
------------------	-------------	--------

9:00am - 10:00pm	Miramar Bar	19 Mid
------------------	-------------	--------

9:00am - 10:00pm	Miramar Bar	19 Mid
------------------	-------------	--------

9:00am - 10:00pm	Miramar Bar	19 Mid
------------------	-------------	--------

9:00am - 10:00pm	Miramar Bar	19 Mid
------------------	-------------	--------

9:00am - 10:00pm	Miramar Bar	19 Mid
------------------	-------------	--------

9:00am - 10:00pm	Miramar Bar	19 Mid
------------------	-------------	--------

9:00am - 10:00pm	Miramar Bar	19 Mid
------------------	-------------	--------

9:00am - 10:00pm	Miramar Bar	19 Mid
------------------	-------------	--------

9:00am - 10:00pm	Miramar Bar	19 Mid
------------------	-------------	--------

9:00am - 10:00pm	Miramar Bar	19 Mid
------------------	-------------	--------

9:00am - 10:00pm	Miramar Bar	19 Mid
------------------	-------------	--------

9:00am - 10:00pm	Miramar Bar	19 Mid
------------------	-------------	--------

9:00am - 10:00pm	Miramar Bar	19 Mid
------------------	-------------	--------

9:00am - 10:00pm	Miramar Bar	19 Mid
------------------	-------------	--------

9:00am - 10:00pm	Miramar Bar	19 Mid
------------------	-------------	--------

### WELLBEING & MSC AUREA SPA

9:00am - 9:00pm	Thermal Area	8 Fwd
-----------------	--------------	-------

9:00am - 9:00pm	MSC Aurea SPA	8 Fwd
-----------------	---------------	-------

6:00am - 10:00pm	MSC Gym by Technogym®	8 Fwd
------------------	-----------------------	-------

6:00am - 10:00pm	MSC Gym by Technogym®	8 Fwd
------------------	-----------------------	-------

6:00am - 10:00pm	MSC Gym by Technogym®	8 Fwd
------------------	-----------------------	-------

6:00am - 10:00pm	MSC Gym by Technogym®	8 Fwd
------------------	-----------------------	-------

6:00am - 10:00pm	MSC Gym by Technogym®	8 Fwd
------------------	-----------------------	-------

6:00am - 10:00pm	MSC Gym by Technogym®	8 Fwd
------------------	-----------------------	-------

6:00am - 10:00pm	MSC Gym by Technogym®	8 Fwd
------------------	-----------------------	-------

6:00am - 10:00pm	MSC Gym by Technogym®	8 Fwd
------------------	-----------------------	-------

6:00am - 10:00pm	MSC Gym by Technogym®	8 Fwd
------------------	-----------------------	-------

6:00am - 10:00pm	MSC Gym by Technogym®	8 Fwd
------------------	-----------------------	-------

6:00am - 10:00pm	MSC Gym by Technogym®	8 Fwd
------------------	-----------------------	-------

6:00am - 10:00pm	MSC Gym by Technogym®	8 Fwd
------------------	-----------------------	-------

6:00am - 10:00pm	MSC Gym by Technogym®	8 Fwd
------------------	-----------------------	-------

6:00am - 10:00pm	MSC Gym by Technogym®	8 Fwd
------------------	-----------------------	-------

6:00am - 10:00pm	MSC Gym by Technogym®	8 Fwd
------------------	-----------------------	-------

6:00am - 10:00pm	MSC Gym by Technogym®	8 Fwd
------------------	-----------------------	-------

6:00am - 10:00pm	MSC Gym by Technogym®	8 Fwd
------------------	-----------------------	-------

6:00am - 10:00pm	MSC Gym by Technogym®	8 Fwd
------------------	-----------------------	-------

6:00am - 10:00pm	MSC Gym by Technogym®	8 Fwd
------------------	-----------------------	-------

6:00am - 10:00pm	MSC Gym by Technogym®	8 Fwd
------------------	-----------------------	-------

6:00am - 10:00pm	MSC Gym by Technogym®	8 Fwd
------------------	-----------------------	-------

6:00am - 10:00pm	MSC Gym by Technogym®	8 Fwd
------------------	-----------------------	-------

6:00am - 10:00pm	MSC Gym by Technogym®	8 Fwd
------------------	-----------------------	-------



## DISCOVER THE SHIP!

MSC Seaside brings to life the key distinguishing elements of the MSC Cruises experience. MSC Seaside rewrites the rule book of cruise ship design, blending indoor and outdoor areas to connect you with the sea like never before. Circling the entire ship as low as Deck 8 is a unique seafront promenade lined with places to eat, drink, shop, swim and sunbathe. And you can enjoy more superb views from the two-deck glass-walled atrium and panoramic elevators. Guests can enjoy a range of open-air activities such as dining and drinking al fresco, strolling along the promenade or simply taking in the beautiful sea views from the privacy of one of the many balcony staterooms.

### MSC BIKE ADVENTOURS

For more information on our bike tours, come and speak to the bike team on deck 6.

10:00am-1:00pm/5:00pm-8:00pm (deck 6)

### MSC Excursions



Deck 6 (Mid)  
9:00am – 11:00pm

Deck 8 (Mid)  
8:00am – 2:00pm  
5:30pm – 11:00pm

## EXCURSIONS - Our suggestions for the next days

### MAKE EACH TRIP ASHORE UNFORGETTABLE

For the ultimate experience ashore, take our well-organised tours. Relax, make new friends and experience the best each destination has to offer in the safe hands of our expert guides! For more information, visit the Excursion Office, decks 6 & 8.

### MIA09 – GRAND TOUR: EVERGLADES & BEST OF MIAMI

Whether you're in transit or disembarking in Miami, this city and Everglades tour provides a great way to round off your cruise experience.

### DISCOVER MIAMI!

Only a few places left on our shore excursions, so don't delay!

Hurry to the Excursion Office, decks 6 & 8.

### MIA01D – EVERGLADES TOUR: FOR GUESTS IN DISEMBARKING

Situated in Florida's south, the vast wetland area known as the Everglades is not only of great ecological importance, but also your destination on this half day outing.

## HIGHLIGHTS ENTERTAINMENT

Suggested dress tonight: Elegant

### THEATER SHOW: TIMELESS

Time travel. Truly man's last frontier. Our scientist has finally managed to discover its secret, and sets out with his faithful assistant on a voyage through the past of the ancient Aztecs and into an unknown future. Are you brave enough to come along for the ride?

7:00pm, 8:15pm & 9:30pm, Metropolitan Theater, decks 6 & 7 (Fwd)

### THEATRE SHOW: OPERA, OPERETTA & MUSICAL

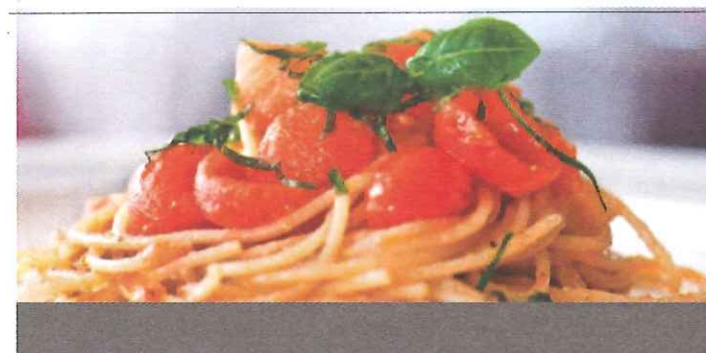
10:30pm, Metropolitan Theater, decks 6 & 7 (Fwd)  
No reservation required

### THEATER COMEDY SHOW: BEERPROV

Adults Only. R Rated

Unscripted Comedy at Sea.  
Brand new jokes each and every night.

11:15pm, Metropolitan Theater, decks 6 & 7 (Fwd)  
No reservation required



## FOOD & BEVERAGE

### TEPPANYAKI BY ROY YAMAGUCHI

The modern East-West cooking style of Japanese cuisine will come to life via four teppanyaki grills. With a modern twist on Asian cuisine, guests can sit at the cooking stations to watch their delicious Japanese dishes come to life in front of their eyes. Expert chefs will cook with flare on an open grill – a visual spectacle and feast for the senses with flames and sizzling ingredients all coming together to form flavorful dishes.

### ASIAN FUSION BY ROY YAMAGUCHI

The à la carte restaurant will serve gourmet Asian creations in a stylish venue with incredible sea views.

### SUSHI BY ROY YAMAGUCHI

The Sushi Bar will serve the freshest sushi, sashimi and tempura.

### WIN A CRUISE BINGO

Any bingo lovers on board? Fantastic. We just wanted to give you the heads up for the big heads down. The numbers will be drawn soon!

3:00pm, Metropolitan Theater, decks 6 & 7, Fwd

### OFFICERS & GENTLEMEN

Don't miss your chance to take to the floor with our very own officers and dance the night away on Elegant Night.

8:00pm, Atrium, deck 5, Mid

### THE QUEST GAME SHOW

Join your Cruise Staff in this wacky grown-up version of a classic good time.

9:00pm, Atrium, decks 5,6,7 & 8 Mid

### STAR FOR A NIGHT

If you like karaoke - you'll love tonight's party. Be the star with a big audience in front of you and a live band behind you. The microphone is yours.

11:15pm, Haven Lounge, deck 7, Aft

## Important to know



### YOUR OPINION IS WORTH A CRUISE

Want to win yourself a free cruise? Just fill in our online comment form when you get home and you could win one of 10 free cruises we're giving away each year! It's our way of showing how much we value your views. To receive an email with a link to the comment form, please remember to leave us your email address (unless you have already signed up to the MSC Club or to our e-newsletter) by filling in the voucher received in the cabin. Voucher also available at the Reception - Guest Service or in any of the on board bars and shops.



### EXPRESS WALK OFF DISEMBARKATION IN MIAMI

We remind all our guests that the "Express Walk off" program allows you to leave the ship immediately after clearance is received from the local authorities in Miami provided you can carry ashore your own luggage without assistance from the ship's personnel. Please DO NOT leave your luggage outside your stateroom the night before arrival in Miami and disregard any luggage tags that will be delivered. On the morning of disembarkation, please make your way to the gangway and wait comfortably for the clearance announcement. Please have your documentation and Cruise Card handy. Further information will be provided in the Disembarkation Program at the end of the cruise.



### 24/7 ONBOARD LIBRARY SERVICE

Take advantage of our wide range of titles available 24/7 in the Library on (deck 7 Aft) and simply return any borrowed books by 12:00 on the day before you disembark.



## Opening hours

### BREAKFAST, DINING & SNACKS

Times	Location	Deck
<b>BISCAYNE BAY BUFFET &amp; PIZZA</b>		<b>16 Mid</b>

*Beverage Station available 20h per day. Coffee, tea, water, ice & creamers*

#### EARLY BIRD BREAKFAST

6:30am - 7:00am	Marketplace Buffet	8 Aft
-----------------	--------------------	-------

#### BREAKFAST

7:30am - 9:00am	Seashore Restaurant	5 Aft
-----------------	---------------------	-------

7:00am - 11:00am	Marketplace Buffet	8 Aft
------------------	--------------------	-------

8:00am - 11:00am	Biscayne Bay Buffet & Pizza	16 Mid
------------------	-----------------------------	--------

--	--	--

#### LUNCH

12noon - 3:00pm	Marketplace Buffet	8 Aft
-----------------	--------------------	-------

#### DINNER

5:30pm (Dinner)	Ipanema Restaurant	6 Aft
-----------------	--------------------	-------

6:00pm (Dinner)	Seashore Restaurant	5 Aft
-----------------	---------------------	-------

6:30pm (Dinner)	Marketplace Restaurant	8 Aft
-----------------	------------------------	-------

7:45pm (Dinner)	Ipanema Restaurant	6 Aft
-----------------	--------------------	-------

8:30pm (Dinner)	Seashore Restaurant	5 Aft
-----------------	---------------------	-------

9:00pm (Dinner)	Marketplace Restaurant	8 Aft
-----------------	------------------------	-------

9:45pm (Dinner)	Ipanema Restaurant	6 Aft
-----------------	--------------------	-------

--	--	--

--	--	--

--	--	--

--	--	--

--	--	--

--	--	--

--	--	--

--	--	--

--	--	--

--	--	--

--	--	--

--	--	--

--	--	--

--	--	--

--	--	--

--	--	--

--	--	--

--	--	--

--	--	--

--	--	--

--	--	--

--	--	--

--	--	--

--	--	--

--	--	--

--	--	--

--	--	--

--	--	--

--	--	--

--	--	--

--	--	--

--	--	--

--	--	--

--	--	--

--	--	--

--	--	--

--	--	--

--	--	--

--	--	--

--	--	--

--	--	--

### BARS & LOUNGES

Times	Location	Deck
6:30am - 12:30am	Seaside Bar	5 Mid

5:00pm - Midnight	Shine Bar	6 Mid
-------------------	-----------	-------

8:00am - 1:00am	Venchi Cioccolateria & Coffee Bar	6 Mid
-----------------	-----------------------------------	-------

12noon - 8:00pm	Venchi Gelateria & Creperie	7 Aft
-----------------	-----------------------------	-------

8:00am - 2:00am	South Beach Pool Bar	7 Aft
-----------------	----------------------	-------

From 10:00pm	Garage Club	7 Aft
--------------	-------------	-------

7:00pm - 1:00am	Haven Lounge	7 Aft
-----------------	--------------	-------

5:00pm - Midnight	Champagne Bar	7 Mid
-------------------	---------------	-------

From 6:00pm	Miami Casino	7 Fwd
-------------	--------------	-------

5:00pm - 2:00am	Sports Bar	8 Fwd
-----------------	------------	-------

8:00am - 1:00am	Seaview Lounge	8 Fwd
-----------------	----------------	-------

6:00pm - 10:30pm	Bistrot La Bohème & Bar	8 Mid
------------------	-------------------------	-------

5:00pm - Midnight	Wine & Cocktails	16 Mid
-------------------	------------------	--------

From 8:00am	Miami Beach Bar	16 Aft
-------------	-----------------	--------

11:00am - 9:00pm	Jungle Bar	19 Mid
------------------	------------	--------

10:00am - 7:00pm	Aurea Bar	19 Mid
------------------	-----------	--------

12noon - 10:00pm	Miramar Bar	19 Mid
------------------	-------------	--------

--	--	--

--	--	--

--	--	--

--	--	--

--	--	--

--	--	--

--	--	--

--	--	--

--	--	--

--	--	--

--	--	--

--	--	--

--	--	--

--	--	--

--	--	--

--	--	--

--	--	--

--	--	--

--	--	--

--	--	--

--	--	--

--	--	--

--	--	--

--	--	--

--	--	--

--	--	--

--	--	--

--	--	--

--	--	--

--	--	--

--	--	--

--	--	--

--	--	--

--	--	--

--	--	--

--	--	--

--	--	--

--	--	--

--	--	--

--	--	--

--	--	--

--	--	--

--	--	--

### WELLBEING & MSC AUREA SPA

Times	Location	Deck
9:00am - 9:00pm	Thermal Area	8 Fwd

9:00am - 9:00pm	MSC Aurea SPA	8 Fwd
-----------------	---------------	-------

6:00am - 10:00pm	MSC Gym by Technogym®	8 Fwd
------------------	-----------------------	-------

--	--	--

--	--	--

--	--	--

--	--	--

--	--	--

--	--	--

--	--	--

--	--	--

--	--	--

--	--	--

--	--	--

--	--	--

--	--	--

--	--	--

--	--	--

--	--	--

--	--	--

--	--	--

--	--	--

--	--	--

--	--	--

--	--	--

--	--	--

--	--	--

--	--	--

--	--	--

--	--	--

--	--	--

--	--	--

--	--	--

--	--	--

--	--	--

--	--	--

--	--	--

--	--	--

--	--	--

--	--	--

--	--	--

--	--	--

--	--	--

--	--	--

--	--	--

--	--	--

--	--	--

--	--	--

--	--	--

--	--	--

--	--	--

--	--	--

--	--	--

--	--	--

--	--	--

--	--	--

--	--	--

--	--	--

--	--	--

--	--	--

### ENTERTAINMENT AREAS

Times	Location	Deck
10:00am - 1:00pm	Zip Line**	18 Mid

2:00pm - 5:00pm		
-----------------	--	--

--	--	--

--	--	--

--	--	--

--	--	--

--	--	--

--	--	--

--	--	--

--	--	--

--	--	--

--	--	--

--	--	--

--	--	--

--	--	--

--	--	--

--	--	--

--	--	--

--	--	--

--	--	--

--	--	--

--	--	--

--	--	--

--	--	--

||
||
||





## DISCOVER NASSAU!

The Bahamas is spread over 700 islands and 2,500 Cays, with opportunities to explore coral reefs while scuba diving and snorkeling, as well as hiking through the mangrove forests. Nassau, the nation's capital, has abundant beaches and resorts, which keeps the center of tourism along the waterfront. The musical culture in the Bahamas includes traditional "goombay" and down-home "rake & scrape". Situated on the northeast coast of New Providence Island, Nassau is named after William of Orange-Nassau, who became King of England in 1688. Nassau's colonial heritage remains in a number of old forts, pastel-colored buildings, and some lovingly restored grand hotels.

### MSC BIKE ADVENTOURS

Book your bike tour now!

The bike team are available on deck 6 !

**7:00pm-8:30pm (deck 6)**

ALL ABOARD AT **5:30pm**

### MSC Excursions



Deck 6  
(Mid)  
8:00am - 9:30am  
6:00pm - 10:00pm

Deck 8  
(Mid)  
8:00am - 9:30am

### Miss the ship?

**Onboard Satellite phone**  
00870773308290/1

### MSC Agency in Nassau

**MSC BAHAMAS**  
Nassau Container Port Ar-  
wak Cay, Nassau Baha-  
mas.P.O.Box CB-12762  
S223; Nassau, Bahamas  
Tel +1 242 351 115 8

## EXCURSIONS

### MAKE EACH TRIP ASHORE UNFORGETTABLE

For the ultimate experience ashore, take our well-organised tours. Relax, make new friends and experience the best each destination has to offer in the safe hands of our expert guides! For more information, visit the Excursion Office, decks 6 & 8.

### MAKE THE MOST OF YOUR TIME ASHORE

A warm welcome aboard from everyone at the Excursion Office! There are so many places to visit during your cruise, you're spoilt for choice. If you're unsure about which tours to book, come and visit us on deck 6. Enjoy your cruise! .

### DISCOVER MIAMI!

Only a few places left on our shore excursions, so don't delay!  
Hurry to the Excursion Office deck 6 & 8.

### EXPERIENCE THE BEST IN EVERY DESTINATION

For a smooth, safe and sociable trip ashore, book your place on our excursions. With carefully planned itineraries, expert guides and priority access to sights, you'll save time and savour every moment.

Excursion Office, decks 6 & 8.

## HIGHLIGHTS ENTERTAINMENT

Suggested dress tonight: Smart Casual

### THEATER SHOW: PETER PUNK

Join the mythical Peter Pan as he battles his nemesis Captain Hook in a whole new take on Neverland. Action and fantasy combine in this stunning, beautifully designed adventure show. You must book to attend a show, but you can book anytime up to 10 minutes before showtime. Because space is restricted, we ask you to attend each performance only once. Please arrive at least 5 minutes before showtime, or we cannot guarantee your seat.

**7:00pm, 8:15pm & 9:30pm, Metropolitan Theater, decks 6 & 7 (Fwd)**

### THEATRE SHOW: PIANO & VIOLIN CONCERT

**10:30pm, Metropolitan Theater, decks 6 & 7 (Fwd)**  
No reservation required



## FOOD & BEVERAGE

### SPECIALITY DINING PACKAGE

Two respected restaurant brands, two refined culinary experiences.  
Butcher's Cut Steakhouse and Sushi Bar & Pan Asian Restaurant.  
Guests who want to reserve a dining experience on board are invited to visit the restaurant or contact the Thematic Restaurant Manager dialling 6100.



### MSCINEMA AL FRESCO:

Megan Leavey  
Starring: Kate Mara & Ramon Rodriguez  
Rated: PG 13  
Duration: 1h 56min  
**8:00pm & 10:30pm, Miami Beach Pool, deck 16 Aft**

### PIRATE NIGHT

Are you ready for a swashbuckling good time?  
**10:30pm, Haven Lounge, deck 7 Aft**

## Important to know



### CREW SAFETY DRILL

For the safety of everyone onboard, a general emergency exercise for crew members only will be held today at 9:45am. Guests are not required to participate.



### YOUR OPINION IS WORTH A CRUISE

Want to win yourself a free cruise? Just fill in our online comment form when you get home and you could win one of 10 free cruises we're giving away each year! It's our way of showing how much we value your views. To receive an email with a link to the comment form, please remember to leave us your email address (unless you have already signed up to the MSC Club or to our e-newsletter) by filling in the voucher received in the cabin. Voucher also available at the Reception - Guest Service or in any of the on board bars and shops.



### EXPRESS WALK OFF DISEMBARKATION IN MIAMI

We remind all our guests that the "Express Walk off" program allows you to leave the ship immediately after clearance is received from the local authorities in Miami provided you can carry ashore your own luggage without assistance from the ship's personnel. Please DO NOT leave your luggage outside your stateroom the night before arrival in Miami and disregard any luggage tags that will be delivered. On the morning of disembarkation, please make your way to the gangway and wait comfortably for the clearance announcement. Please have your documentation and Cruise Card handy. Further information will be provided in the Disembarkation Program at the end of the cruise.